

I:\Projects\2024\124.0294.30_LAND PLAN.dwg ANDY HEESMANN EXISTING CONDITIONS: 2024/02/28 10:24 AM ANSIFULL BLEED D (4.00 X 22.00 INCHES)

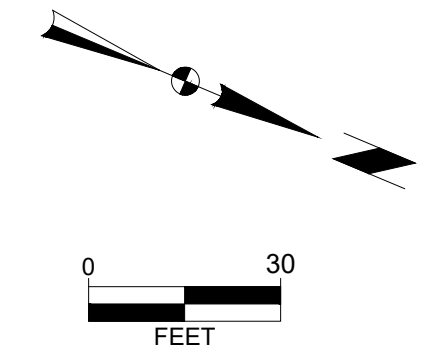


Atwater Park Landscape Plan

Existing Amenities*		
Items	Unit	Quantity
Trash	EA	7
Recycling	EA	3
Benches	EA	15
Picnic Table	EA	1
Bike Parking	TOTAL	24
Bike Racks	EA	3
Public Art	EA	1
Signage - Interpretive	EA	2
Park Signage	EA	1
Flag Pole	EA	1
Dog Waste Station	EA	1
Drinking Fountain	EA	1
Terrace Street Lights	EA	3
Paved Surfaces	SF	15,441

*Quantities are approximate

- NOTES:**
1. WisDOT HIGHWAY 32 / LAKE DRIVE PLANS INCLUDED AS EXISTING CONDITIONS.
 2. TOPOGRAPHY OBTAINED THROUGH MILWAUKEE COUNTY LIDAR DATA.
 3. QUANTITIES OBTAINED FROM SITE VISITS AND AERIAL PHOTOGRAPHY.

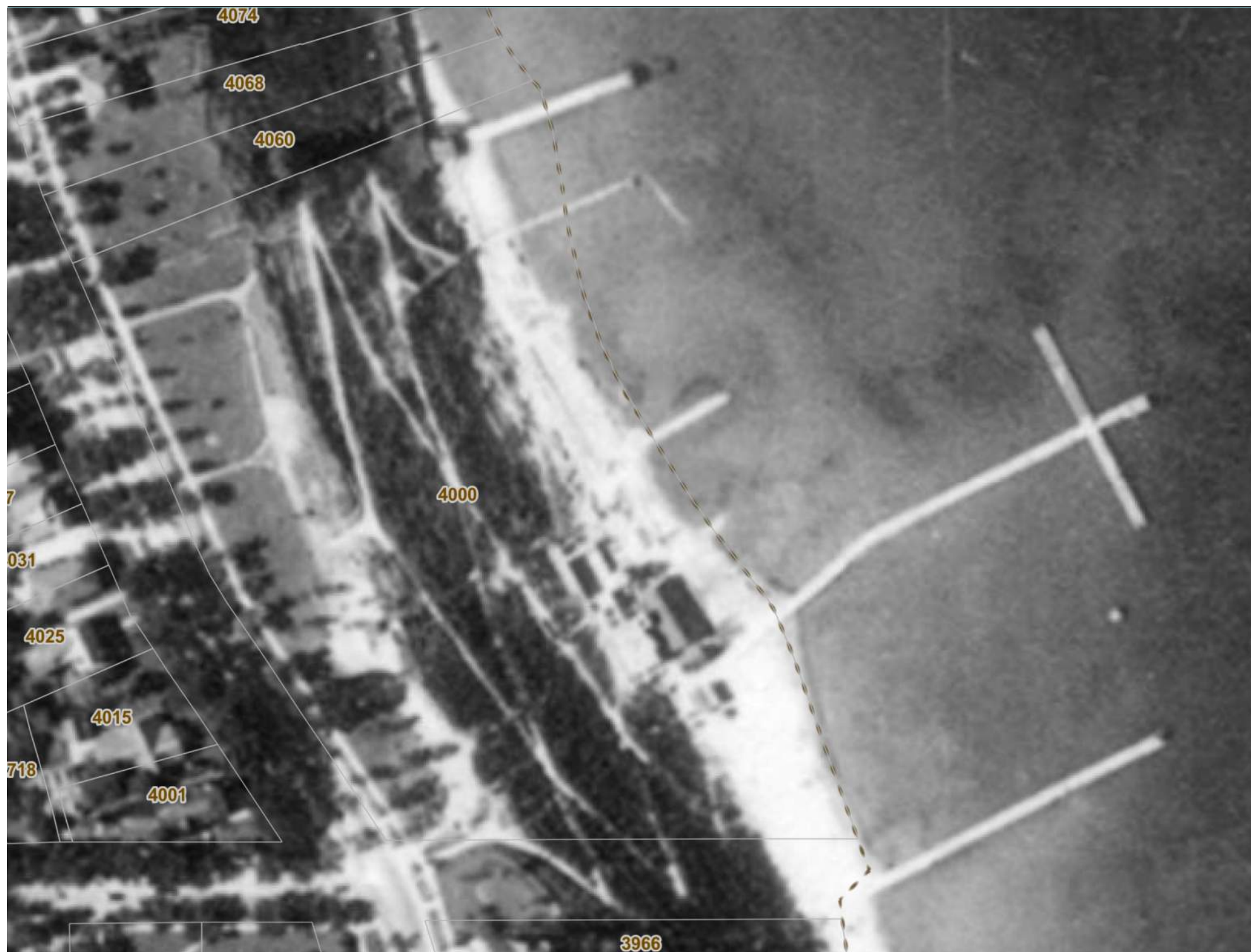


MARK	REVISION	DATE	BY
Engineer: ENGR	Checked By: CHKD	Scale: 1" = 30'	
Technician: TECH	Date: 3-13-2024	T-R-S: TTN-RRW-SS	

Project No: 124.0294.30
Sheet L-100

ATWATER LANDSCAPE
EXISTING CONDITIONS
SNYDER & ASSOCIATES, INC.
 VILLAGE OF SHOREWOOD, WISCONSIN
 5010 VOGES ROAD
 MADISON, WISCONSIN 53718
 608-838-0444 | www.snyder-associates.com

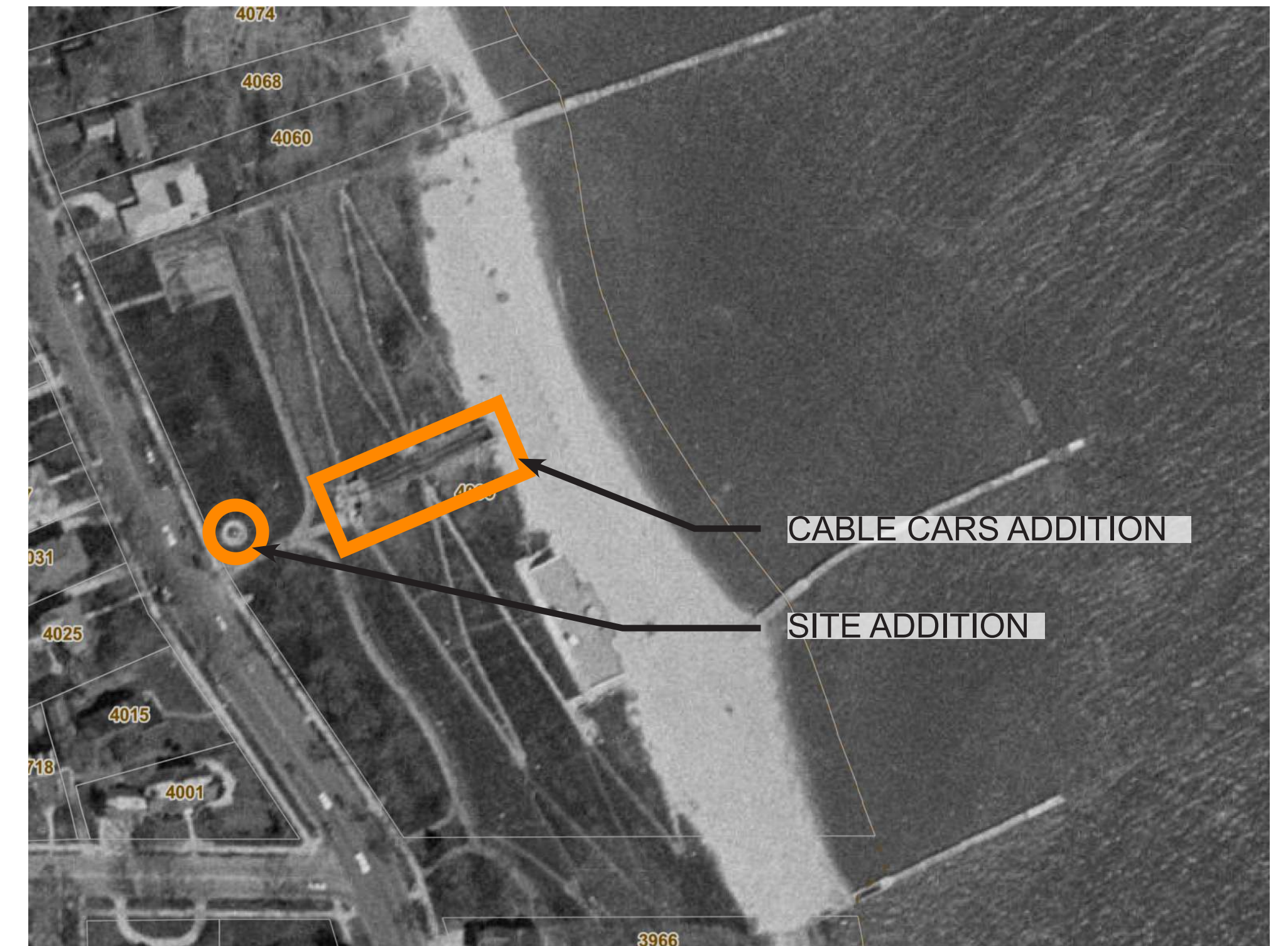




1937



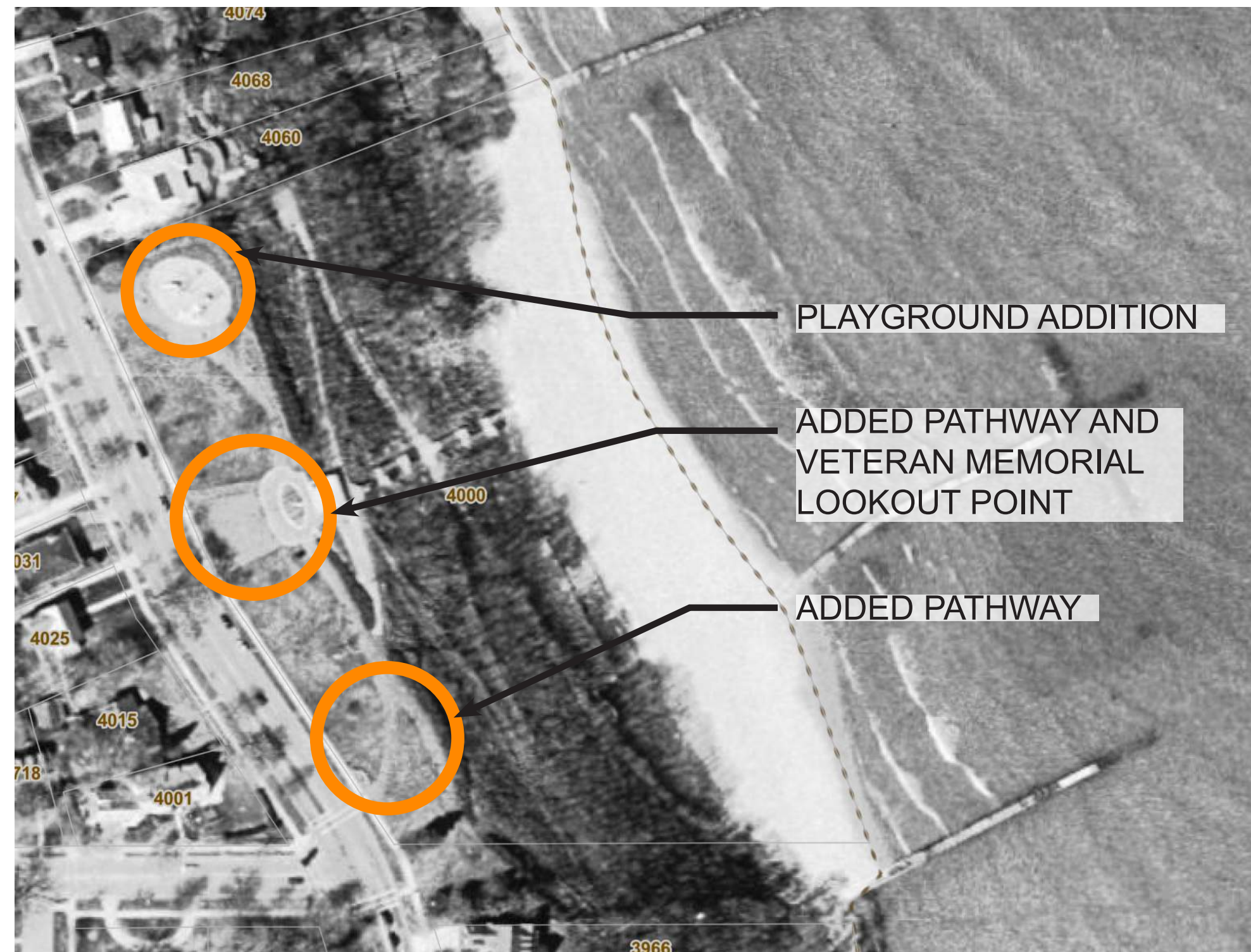
1951



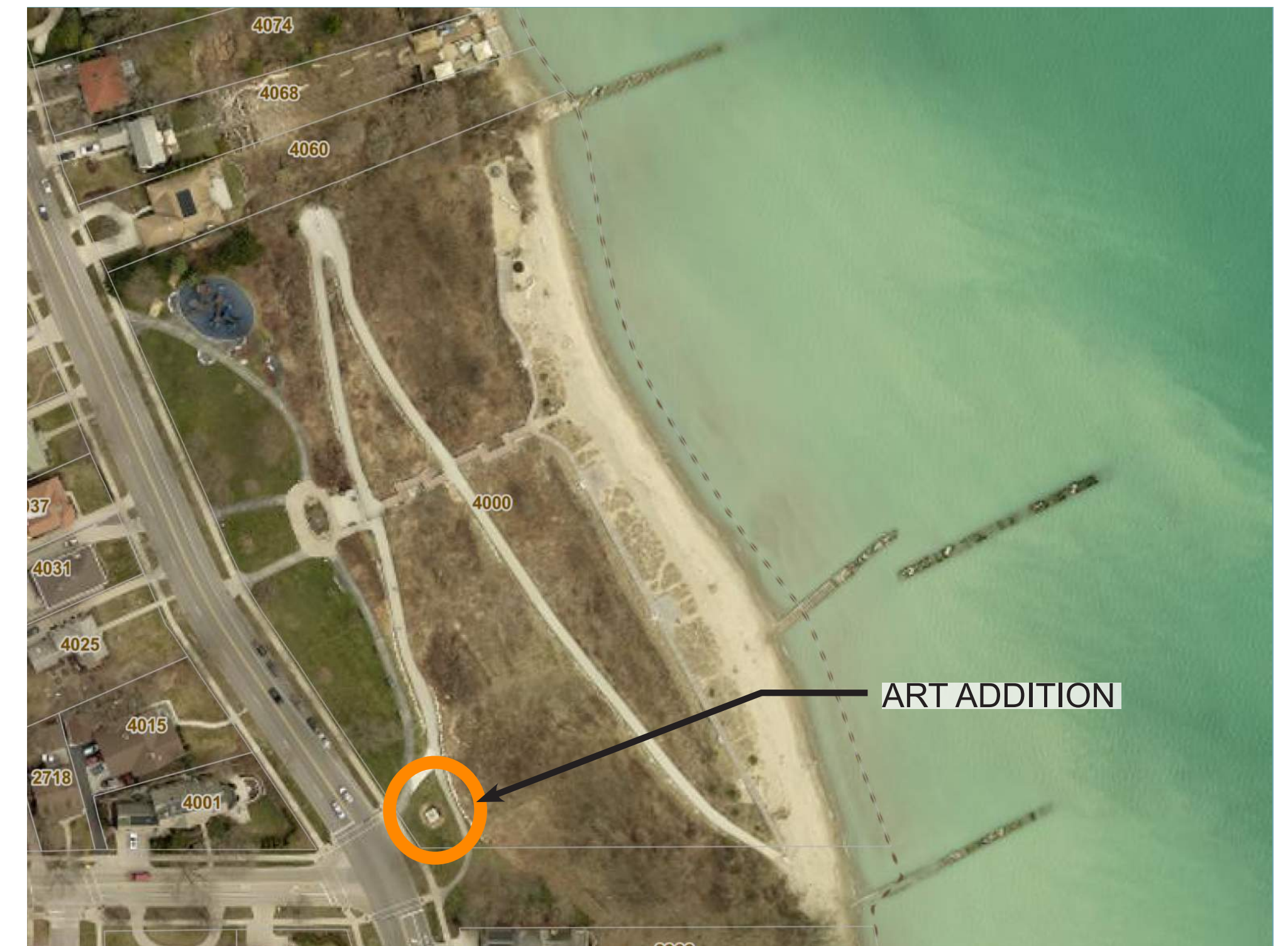
1970



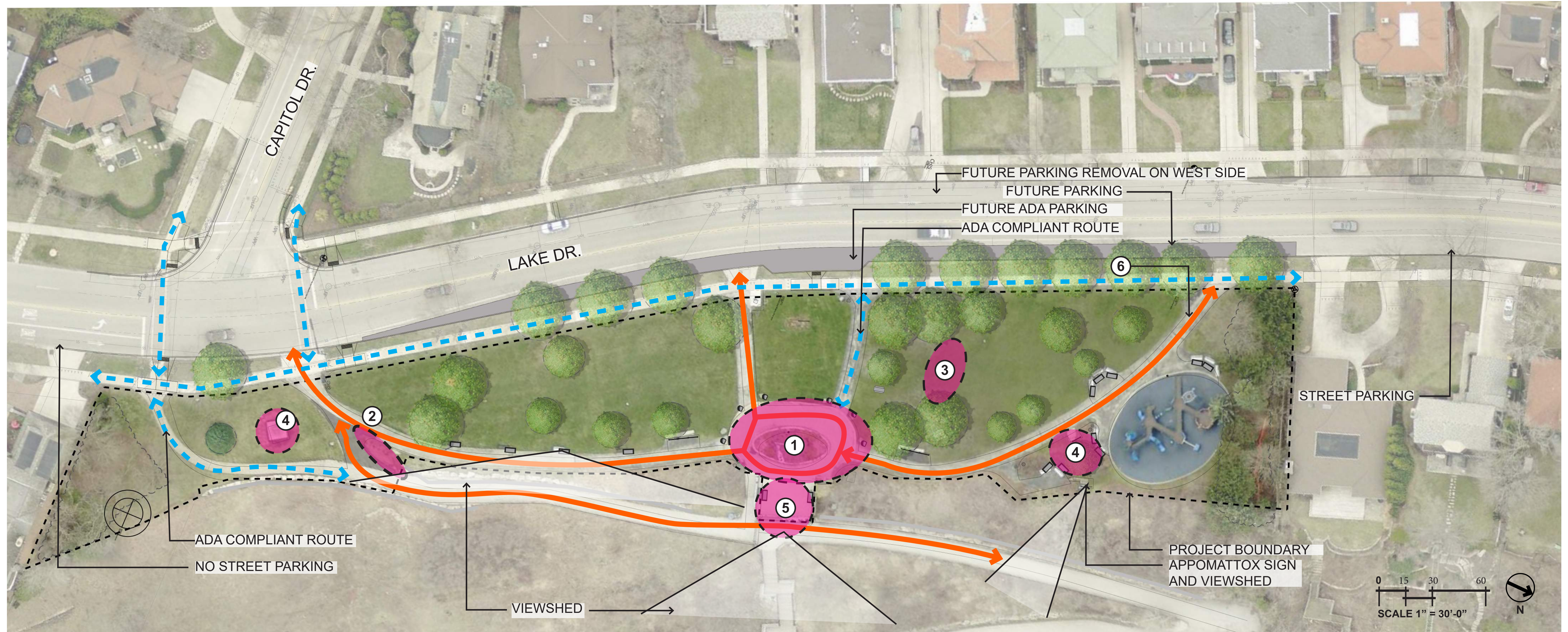
1990



1995



PRESENT



PROJECT DESCRIPTION:

The intent of these boards is to provide an inventory of existing site conditions and target future improvements for the upper park area.

The goals for the conceptual plan are to reestablish maintenance and pedestrian circulation enhancements at the upper terrace of the park. The plan is intended to ensure safe pedestrian and maintenance paths, reestablish hardscape areas to accommodate all users, and revegetate areas that have become degraded due to over use and typical aging. The approved concept plan will include cost estimates for improvements to help establish future funding and the incorporation of the plan into the Village's Comprehensive Park Plan.

MAINTENANCE VEHICLES:

To ensure the safety and enjoyment of the upper park and the beach, the Village of Shorewood Public Works utilizes a fleet of vehicles that must negotiate the steep grades and limited space.



LEGEND:

- PEDESTRIAN ROUTE
- PEDESTRIAN / MAINTENANCE ROUTE
- ISSUE AREA
- PROJECT BOUNDARY

ISSUE AREAS

- ① CENTRAL SPACE - PAVER FAILURE & LIMITED CIRCULATION
- ② MAINTENANCE VEHICLE AREA - LANDSCAPE FAILURE AND STEEP SLOPES
- ③ SATURATED SOILS
- ④ LIMITED VEGETATION GROWTH
- ⑤ AGING GUARDRAIL
- ⑥ FAILING ASPHALT

SITE INVENTORY & ANALYSIS NOTES:

- 1. Graphic includes portions of the design for WisDOT Highway 32 / Lake Dr. Plans.
- 2. ADA compliant routes are approximate and were determined based on LiDAR (Light Detection and Ranging) topography obtained through Milwaukee County.



VILLAGE OF SHOREWOOD : ATWATER PARK - SITE CIRCULATION UPDATES

GRAPHICS ARE FOR ILLUSTRATIVE PURPOSES ONLY

SITE INVENTORY

04/04/2024



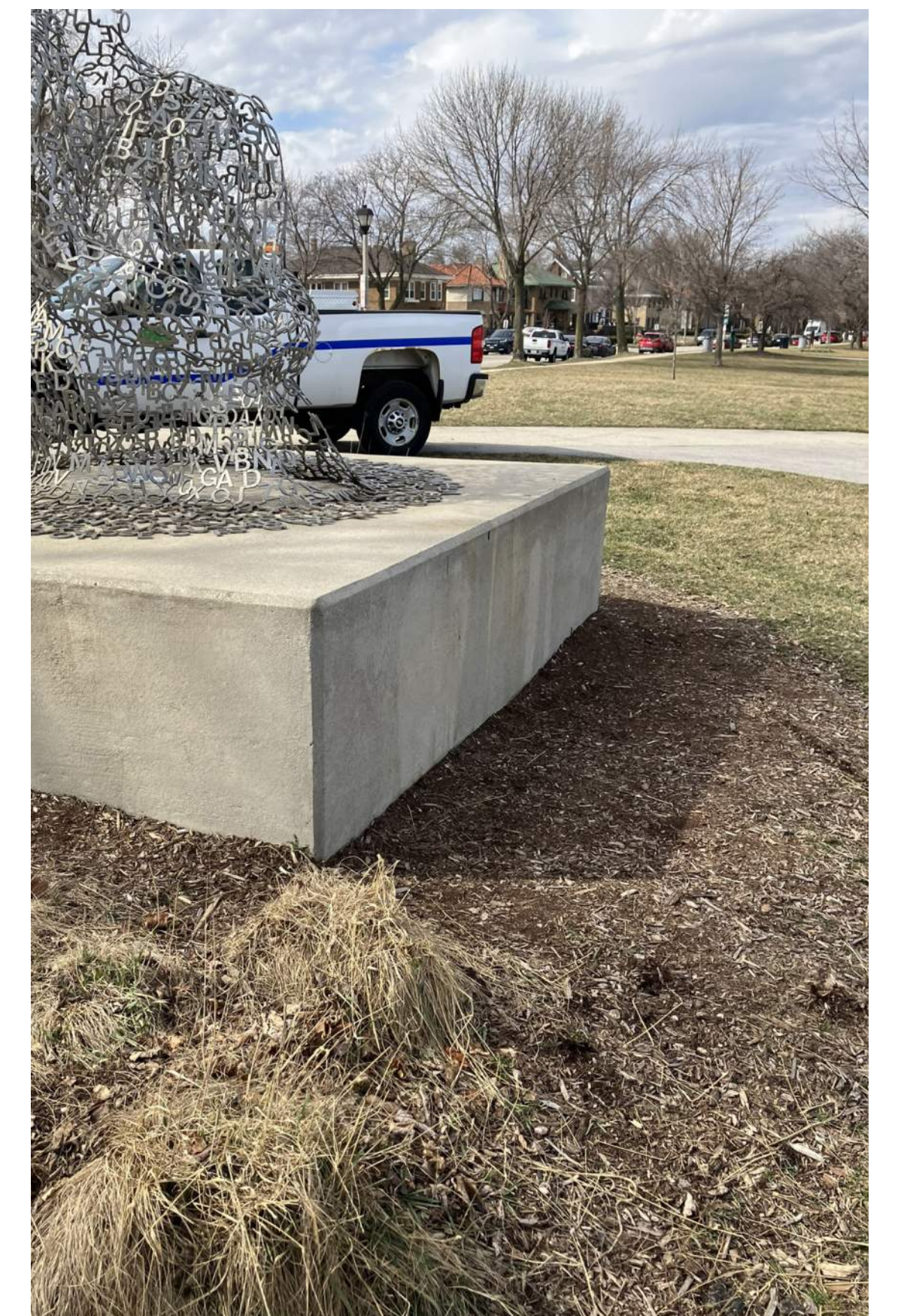
CENTRAL SPACE:

- Central planter limits mobility and the potential for larger events and maintenance circulation.
- Pavers have settled and created “ponding” and tripping issues.
- Mix of materials (pavers, concrete, and asphalt) creates challenges for level transitions between plaza and path.
- Flag pole requires bucket truck for raising and lowering.
- Plaza topography generally sheds water towards the roof of the restroom structure.



LIMITED VEGETATION GROWTH

- Turf has consumed some planter beds and limited enhanced landscape spaces.
- Foot traffic and heavy use has limited plant survivability at the *Spillover II* public art sculpture.



MAINTENANCE VEHICLE AREAS:

- Steep topography and limited turning movements creates continued maintenance challenges.



FAILING ASPHALT:

- Failing asphalt creates safety and drainage issues.



AGING GUARDRAIL:

- Guardrail paint is chipping and rusting.
- Stainless steel can be hot during warmer temperatures.

