



# WILSON DRIVE CORRIDOR

## BOARD 1: PAST PLANNING

SHOREWOOD, WI



### COMMITTEE DESIRES, INTERESTS & CONCERNS PROVIDED BY PREVIOUS PLANNING COMMITTEES

#### ENVIRONMENTAL WORK GROUP

**Mission Statement: Preserve Biodiversity**

**1. Preserve, improve and maintain quality of green space**

- Remove invasive species of plants in a thoughtful manner
- Maintain trees
- Add Gardens (butterfly/bird, raised bed)

**2. Maintain bird and animal habitats—both migratory and native**

**3. Storm water management**

- Permeable pavement
- Bio swales
- Plant more trees

**4. Stop snow dumping**

**5. Increase historical and educational signage**

#### PARK AND RECREATION WORK GROUP

**1. Preserving Usable, Attractive, and Healthy green space west of Wilson Drive**

**2. Accessibility to the Park & Oak Leaf Trail from the East**

**3. Improve visual sight lines into Park & Oak Leaf Trail from Wilson Drive**

**4. Improve Pedestrian safety crossing Wilson Drive & crossing Oak Leaf Trail**

**5. Improve Bicycle safety on Wilson Drive & Oak Leaf Trail**

**6. Promote Physical, Emotional, and Health benefits of green space - Recreation Opportunities / Relaxation Zones / Quality of Life**

#### TRAFFIC AND SAFETY WORK GROUP

**1. Create ADA accessible park / trail entrances.**

**2. Maintain traffic flow - reduce neighborhood impact from redesigned roadway - Make safe, efficient passage for emergency vehicles**

**3. Accommodate bicycles on Wilson Drive**

**4. Improve crossing Wilson Drive safety for all nonmotorized users (pedestrians, bicycles, strollers, wheel chairs, etc.)**

**5. Reduce speed to the posted speed limit**

**6. Improve pedestrian safety at intersections as well as on side street crossings (Congress/Woodruff, Wildwood/Olsen)**

**7. Maintain safe and accessible bus stops**

**8. Continue street parking on both sides of Wilson Drive**

#### DEVELOPMENT WORK GROUP

**1. Make two or more attractive entrances (gateways) to the park that work for pedestrians and bicyclists**

- Safety of bicyclists and pedestrians
- Access issues – pedestrians, bicycles, strollers, handicapped
- ADA access
- Better access to the Oak Leaf Trail
- Visual access from Wilson Drive to Oak Leaf Trail and Estabrook Park

**2. Native fauna and flora**

- Remove invasive species
- Birds and animals

**3. All weather uses – active space**

**4. Storm water management**

**5. Responsible use of tax money**

**6. Enable community enjoyment and meeting space**

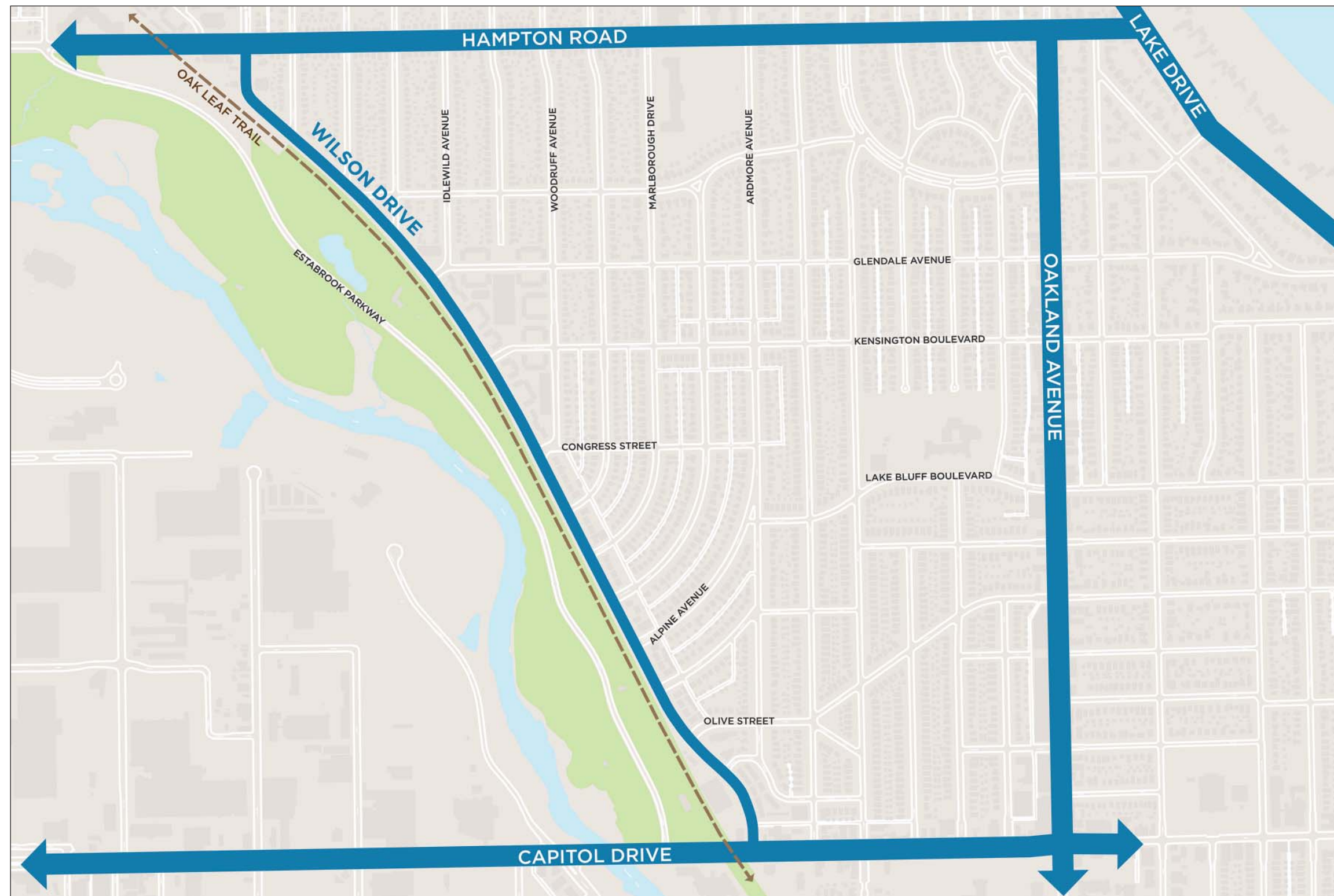
**7. Traffic spillover into neighborhoods; minimize increasing traffic**

# WILSON DRIVE CORRIDOR

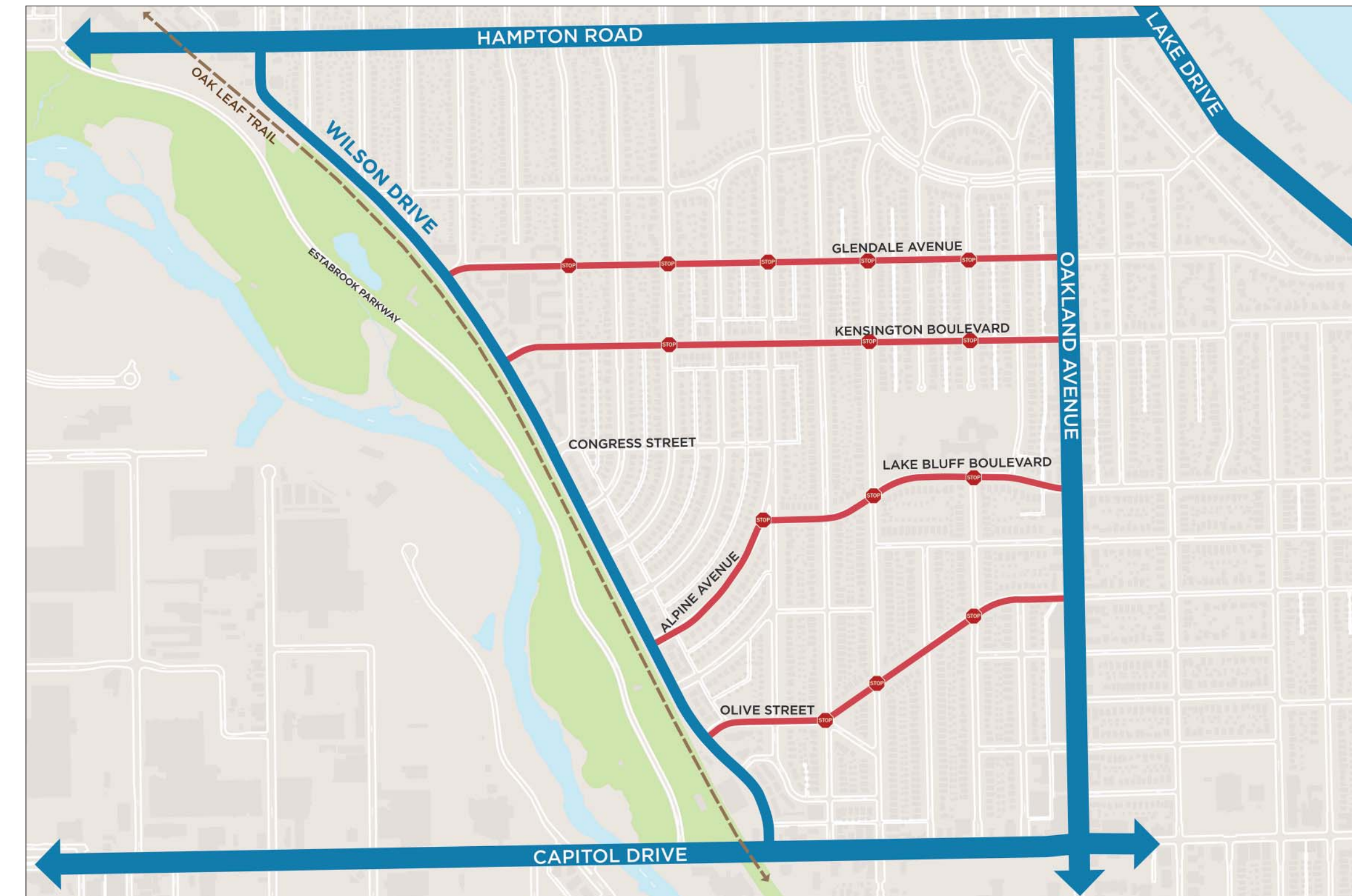
## BOARD 2: SITE ANALYSIS DIAGRAMS

SHOREWOOD, WI

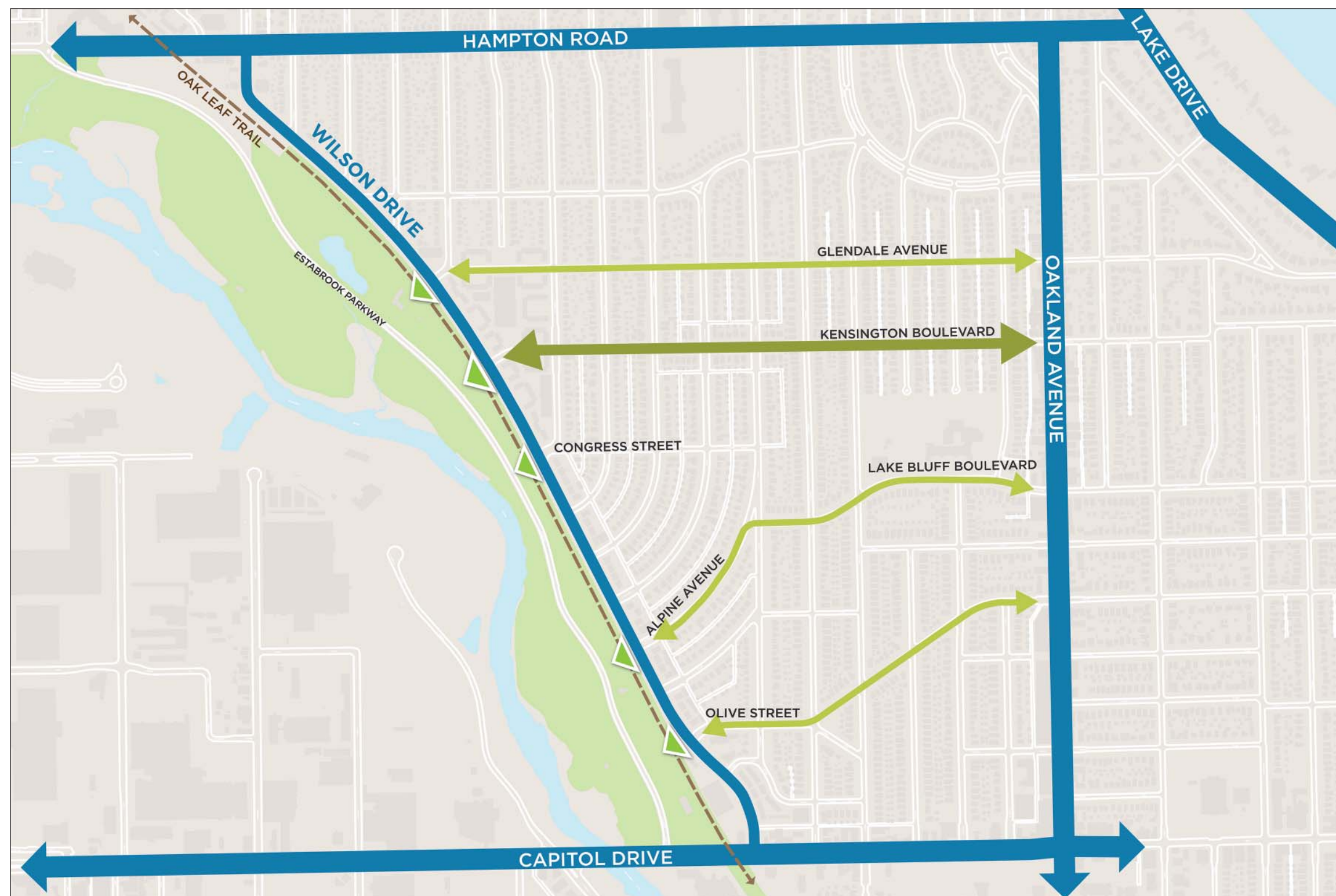
EXISTING MAJOR ROADWAYS



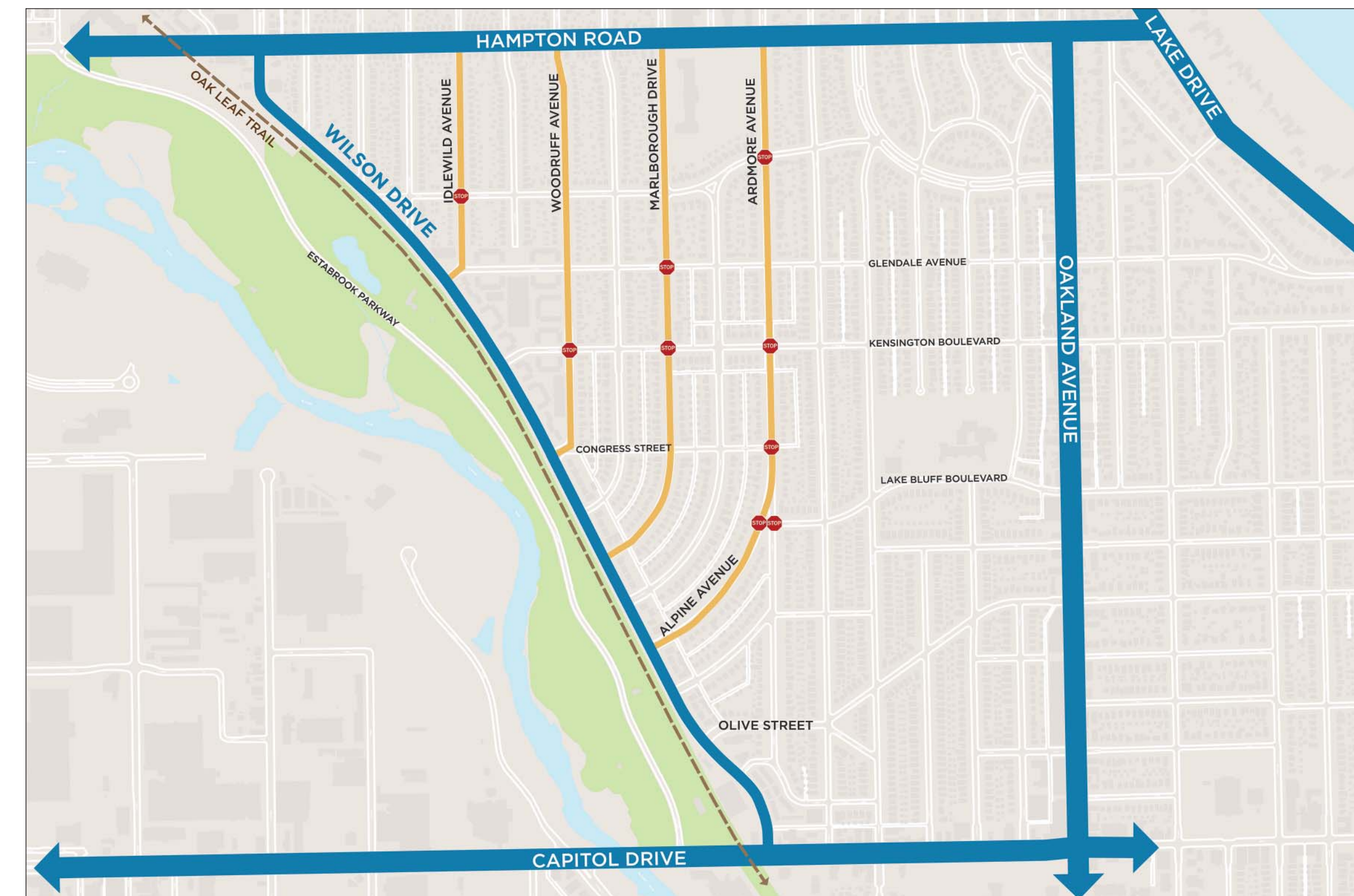
EXISTING EAST-WEST TRAFFIC CONTROLS



EXISTING PRIMARY AND SECONDARY BIKE ROUTES



EXISTING NORTH-SOUTH TRAFFIC CONTROLS





# WILSON DRIVE CORRIDOR

## BOARD 3: EXISTING PARKING

SHOREWOOD, WI



Wilson Drive On-Street Parking Supply

Properties	On-Site Parking Provided	Total Supply OnStreet Both Sides
<b>Capitol - Kenmore Block</b>		
4012-26 WILSON	12	
4028-32 WILSON	7	
4038-46 WILSON	11	
	<b>61</b>	<b>29</b>
<b>Kenmore - Olive Block</b>		
4102 WILSON	0	
	<b>0</b>	<b>13</b>
<b>Olive - Olson Block</b>		
1204 OLIVE	4	
4206 WILSON	4	
4214 WILSON	4	
4204 OLSON	3	
	<b>23</b>	<b>27</b>
<b>Olson - Alpine Block</b>		
4205 OLSON	4	
4244 WILSON	5	
4250 WILSON	4	
4304 APLINE	6	
	<b>19</b>	<b>23</b>

<b>Alpine - Wildwood Block</b>		
4272 WILSON	6	
4282 WILSON	6	
4286 WILSON	6	
4290 WILSON	6	
	<b>24</b>	<b>23</b>

<b>Wildwood - Marlborough Block</b>		
4302 WILSON	8	
4308 WILSON	5	
4314 WILSON	5	
4320 WILSON	8	
	<b>26</b>	<b>23</b>

<b>Marlborough - Sheffield Block</b>		
4305 MARLBOROUGH	5	
4340 WILSON	6	
4348 WILSON	7	
4304 SHEFFIELD	6	
	<b>24</b>	<b>25</b>

<b>Sheffield - Congress Block</b>		
4305 SHEFFIELD	5	
4370 WILSON	4	
4378 WILSON	8	
4384 WILSON	8	
4392 WILSON	5	
	<b>30</b>	<b>30</b>

<b>Estabrook Homes</b>		
4400-4600 WILSON/GLENDALE/KENSINGTON		105

207 298

WILSON DRIVE ON-STREET PARKING

Wilson Dr		Side Streets
Cap-Kenmore: W	11	N Kenm, 0
Cap-Kenmore: E	18	S Kenm, 0
Kenm-Olive: W	10	N Oliv, 4
Kenm-Olive: E	3	S Oliv, 4
Olive-Olson: W	14	N Ols, 5
Olive-Olson: E	13	S Ols, 5
Olson-Alpine: W	12	N Alp, 5
Olson-Alpine: E	11	S Apl, 5
Alpine-Wildwood: W	12	N Wild, 4
Alpine-Wildwood: E	11	S Wild, 4
Wildwood-Marb: W	12	N Marl, 4
Wildwood-Marb: E	11	S Marl, 4
Marlb-Sheffield: W	13	N Shef, 4
Marlb - Sheffield: E	12	S Shef, 4
Sheffield-Congress: W	16	N Con, 0
Sheffield-Congress: E	14	S Con, 0
Estabrook Homes: W	55	N Kens, 14
Estabrook Homes: E	50	S Kens, 14
		N Glend, 28
		S Glend, 28

East Side 143  
West Side 155  
**298**

2014 Parking Counts		On-Street Parking Demand																							
On-Street Parking Supply		Monday May 12, 2014							Wednesday May 14, 2014							Saturday May 17, 2014							May 12	May 14	May 17
SUPPLY																									
Day		9:00 AM	11:00 AM	1:00 PM	3:00 PM	5:00 PM	7:00 PM	9:00 AM	11:00 AM	1:00 PM	3:00 PM	5:00 PM	7:00 PM	9:00 AM	11:00 AM	1:00 PM	3:00 PM	5:00 PM	7:00 PM	3:00 AM	3:00 AM	3:00 AM			
Wilson, Cap - Glendale (East side)	143	33	38	32	32	32	37	37	39	35	30	36	25	46	49	49	44	56	60	18	21	65			
Wilson, Cap - Glendale (West side)	155	2	2	2	4	6	6	5	4	3	5	2	3	4	5	6	5	7	6	2	0	5			
Total	298	35	40	34	36	38	43	42	43	38	35	38	28	50	54	55	49	63	66	20	21	70			
Percent Demand		12%	13%	11%	12%	13%	14%	14%	14%	13%	12%	13%	9%	17%	18%	18%	16%	21%	22%	7%	7%	23%			

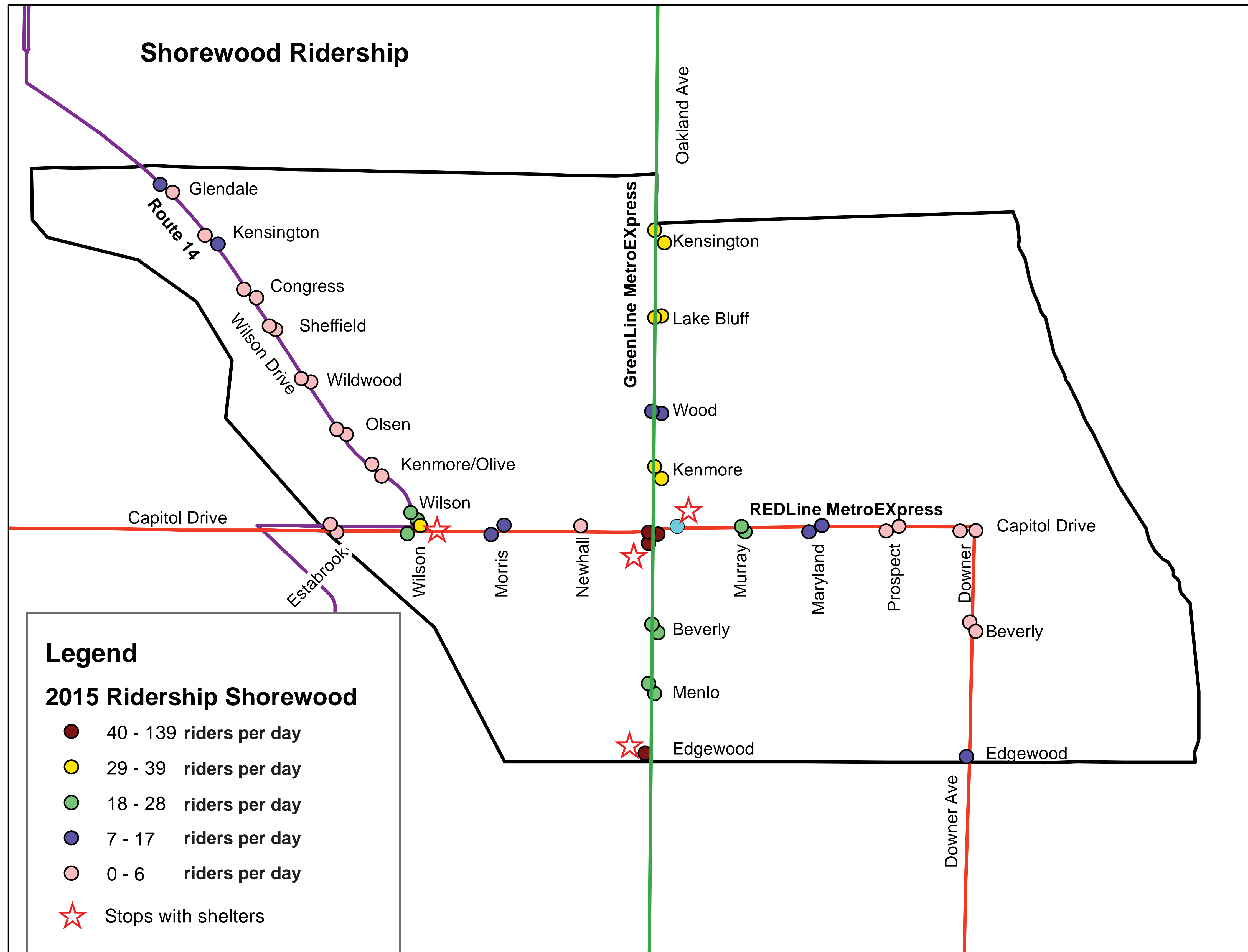
		Saturday May 17, 2014						
SUPPLY								
Day		9:00 AM	11:00 AM	1:00 PM	3:00 PM	5:00 PM	7:00 PM	
Wilson, Cap - Glendale (East side)	143	46	49	49	44	56	60	
Wilson, Cap - Glendale (West side)	155	4	5	6	5	7	6	
Total	298	50	54	55	49	63	66	
Percent Demand		17%	18%	18%	16%	21%	22%	



# WILSON DRIVE CORRIDOR

## BOARD 4: TRANSIT

SHOREWOOD, WI



SOURCE: MCTS 2015



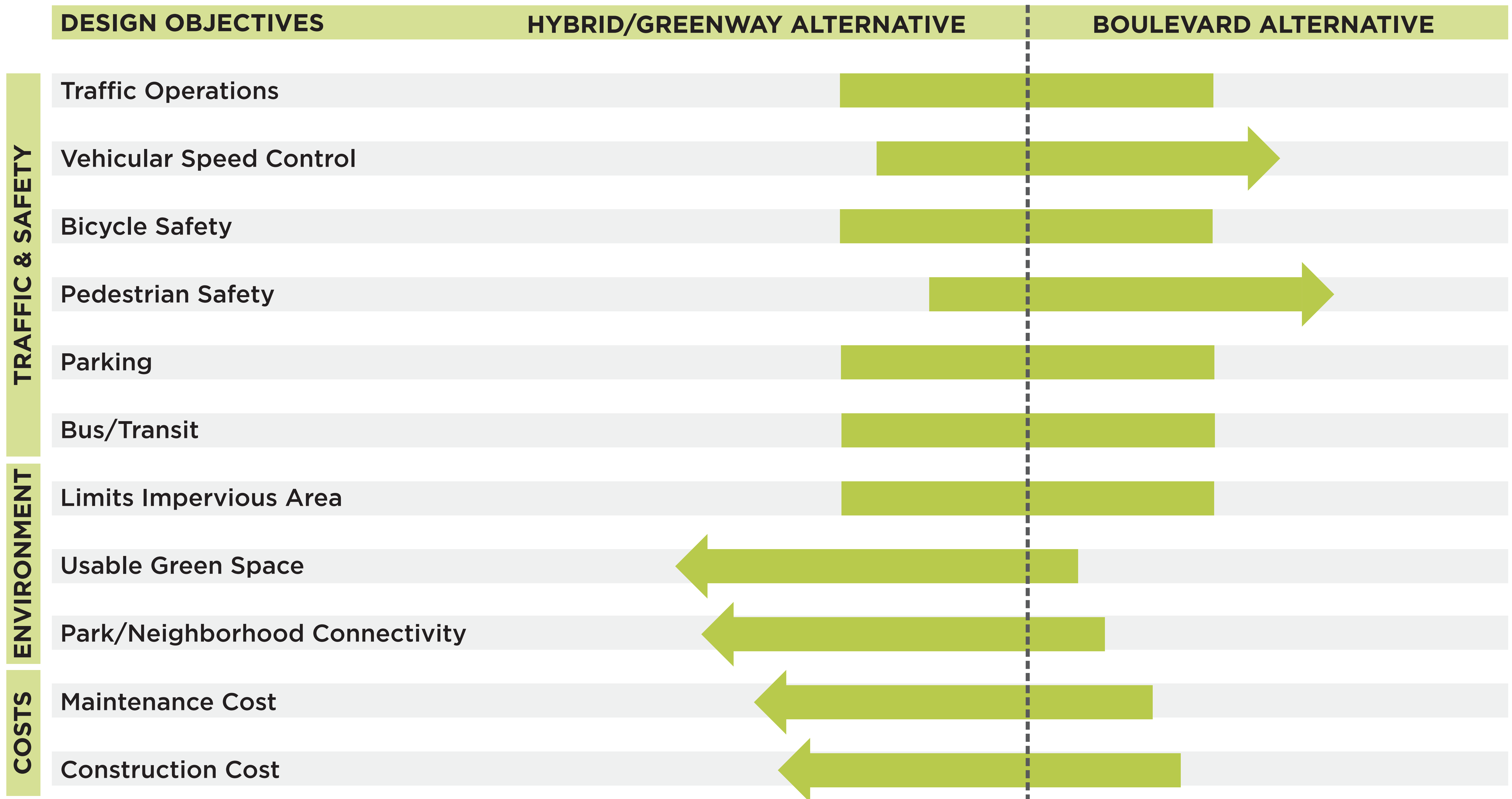
# WILSON DRIVE CORRIDOR

## BOARD 5: ALTERNATIVE ANALYSIS

SHOREWOOD, WI



See "Preliminary Design Alternatives" Exhibit Board for visuals of each alternative.





# WILSON DRIVE CORRIDOR

## BOARD 6: TRAFFIC STUDY

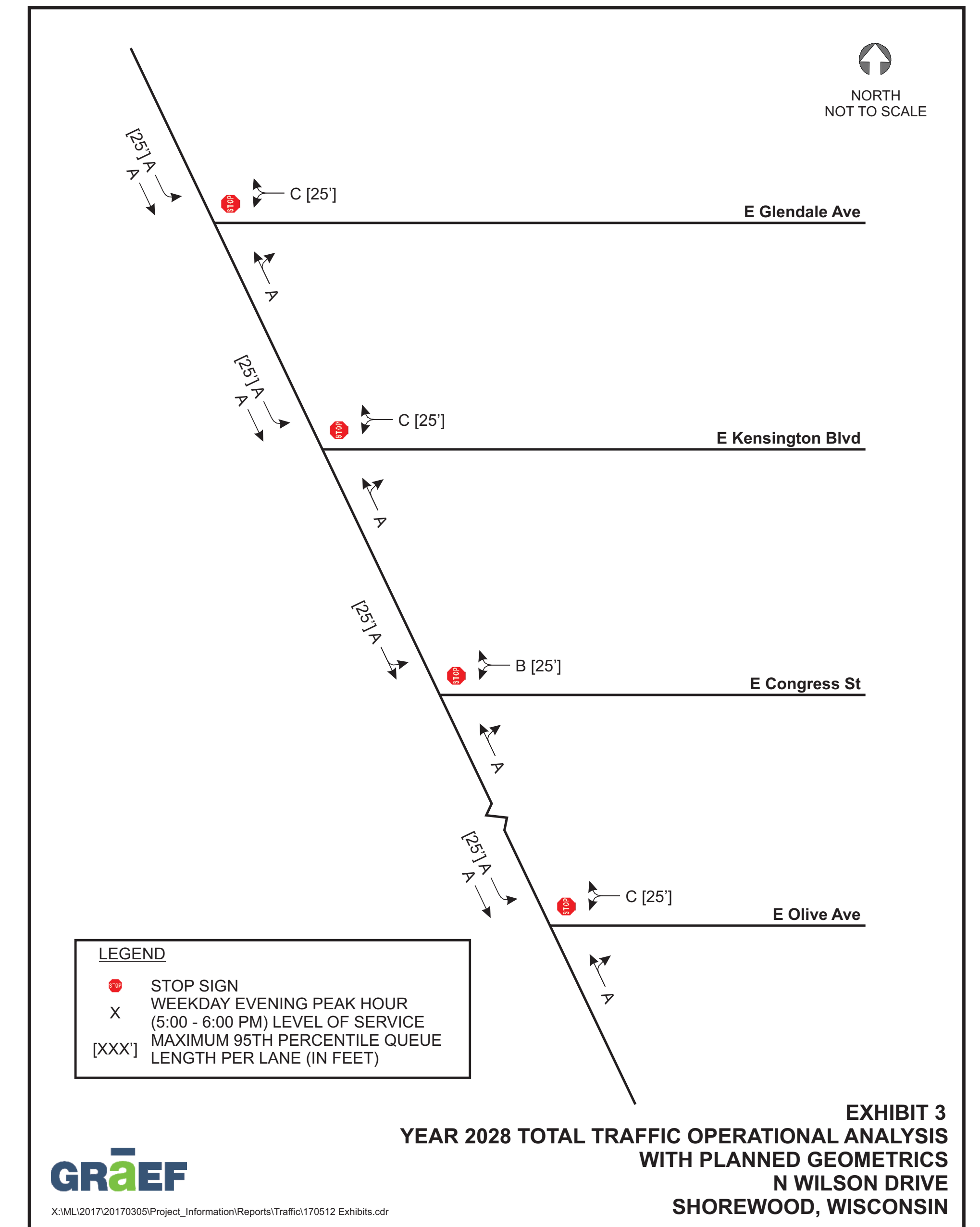
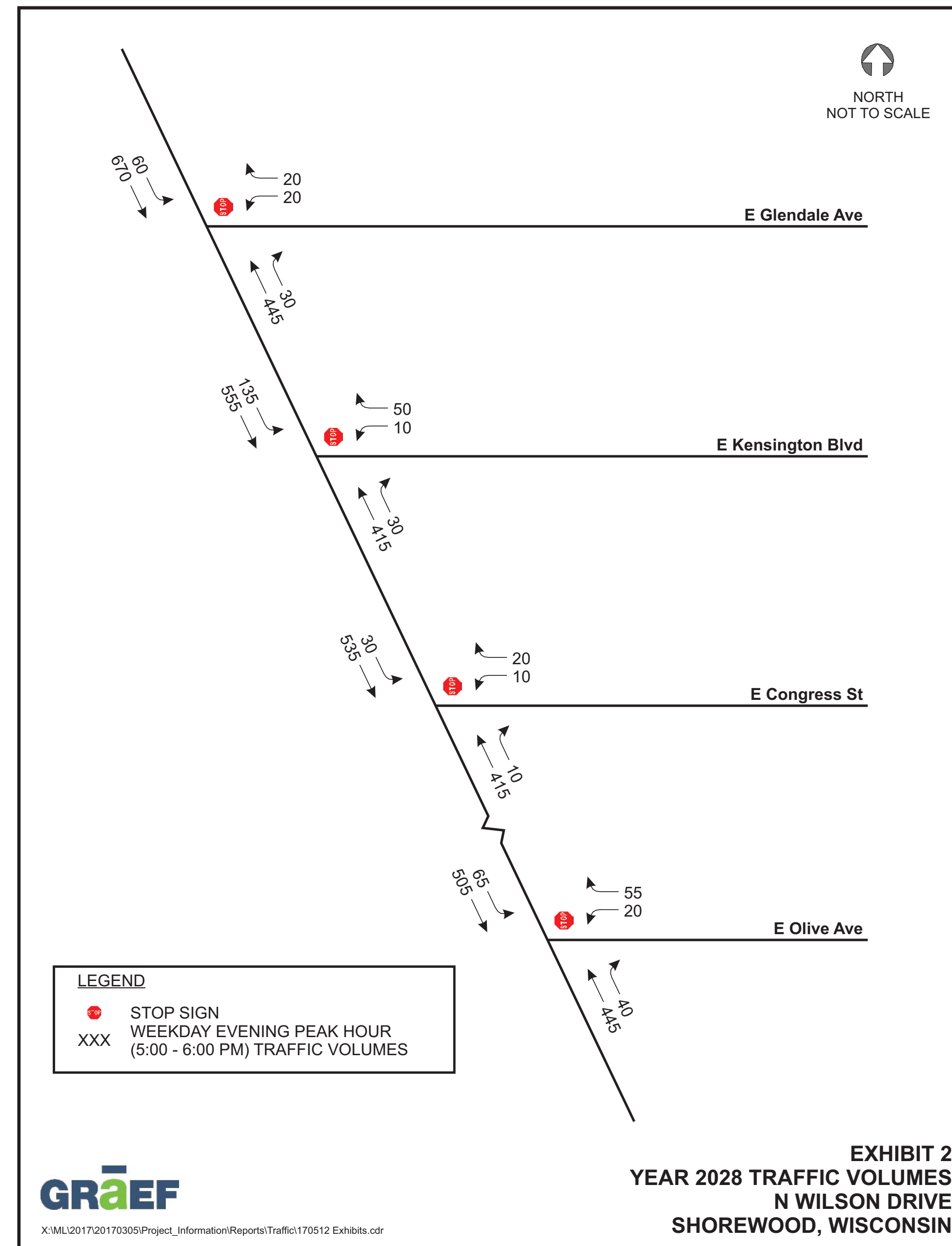
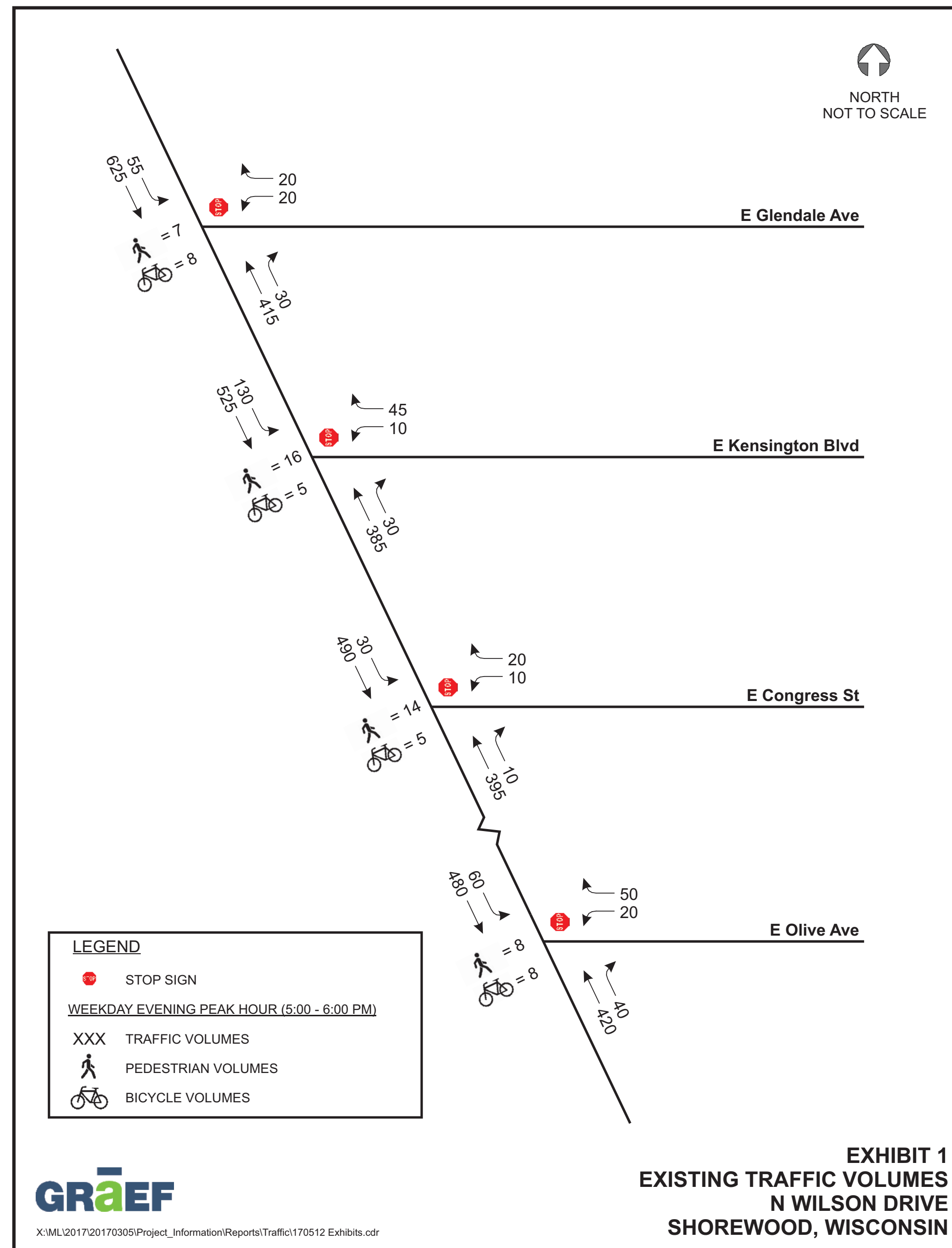
SHOREWOOD, WI



### Daily Traffic Forecasts

N. Wilson Drive	Existing AADT <sup>1</sup>	Annual Average Daily Traffic (AADT) Forecasts		
		Year 2018	Year 2028	Year 2038
Between E. Kenmore Pl & E. Capitol Drive	10,600 (Year 2016)	10,700	11,250	11,850
North of N. Marlborough Drive	7,400 (Year 2016)	7,500	7,850	8,300

<sup>1</sup> Source: Wisconsin Department of Transportation



Traffic counts were performed in the PM hour on Tuesday, April 25, 2017 at the intersections of Wilson Drive & Olive, Kensington, Glendale, and Congress. School was in session on this day and counts were done in accordance with best practice, collecting data on a Tuesday, Wednesday, or Thursday in good weather. The counts were collected from 3:00 pm - 6:30 pm and the peak hour was identified from 5:00 - 6:00 pm.

Traffic forecasting was done for the project assuming a 0.5% growth rate over the course of 20 years. This is a fairly conservative growth rate for a fully developed area. This growth rate was compared to historical data and determined to be accurate for the area.

# WILSON DRIVE CORRIDOR

## BOARD 7: SAFETY STUDY

SHOREWOOD, WI

Table 1.1  
Segment Crash Rates

N. Wilson Drive	Year	Crash Severity			Total No. Crashes	Crash Rate <sup>(1)</sup> 2011-2015	Statewide Crash Rate <sup>(1)</sup> 2011-2015
		Fatal	Injury	Property Damage			
North of E. Capitol Drive to E. Glendale Avenue	2011	0	2	2	4	X	X
	2012	0	1	2	3		
	2013	0	2	2	4		
	2014	0	1	3	4		
	2015	0	4	1	5		
<b>Total</b>	<b>2011-2015</b>	0	10	10	20	155	350

<sup>(1)</sup> Crash rate based on 100 million vehicles miles traveled (100 MVMT)

Table 1.2  
Segment KAB Crash Rates

N. Wilson Drive	Year	Total No. KAB Crashes	KAB Crash Rate <sup>(1)</sup> 2011-2015	Statewide KAB Crash Rate <sup>(1)</sup> 2011-2015
North of E. Capitol Drive to E. Glendale Avenue	2011	1	X	X
	2012	1		
	2013	1		
	2014	1		
	2015	1		
<b>Total</b>	<b>2011-2015</b>	5	39	40

<sup>(1)</sup> Crash rate based on 100 million vehicles miles traveled (100 MVMT)

Table 2  
Crash Type Summary

N. Wilson Drive Intersections	Year							Total
	Rear End	Sideswipe	Left-turn	Right Angle	Single Vehicle	Pedestrian	Bicycle	
E. Kenmore Pl	0	0	0	0	0	0	0	0
E. Olive St	1	1	0	2	1	0	0	5
N. Olsen Ave	0	0	0	0	1	0	0	1
N. Alpine Ave	0	1	0	1	0	0	0	2
N. Wildwood Ave	1	0	0	0	0	0	0	1
N. Marlborough Dr	0	0	0	0	0	0	0	0
N. Sheffield Ave	0	0	0	0	1	0	0	1
E. Congress St	0	0	0	0	1	0	0	1
E. Kensington Blvd	1	0	0	0	0	0	0	1
E. Glendale Ave	0	0	0	0	0	0	0	0
<b>Intersection Total</b>	<b>3</b>	<b>2</b>	<b>0</b>	<b>3</b>	<b>4</b>	<b>0</b>	<b>0</b>	<b>12</b>
<b>Non-Intersection Total</b>	<b>4</b>	<b>1</b>	<b>0</b>	<b>1</b>	<b>2</b>	<b>0</b>	<b>0</b>	<b>8</b>
<b>Project Total</b>	<b>7</b>	<b>3</b>	<b>0</b>	<b>4</b>	<b>6</b>	<b>0</b>	<b>0</b>	<b>20</b>

Table 3  
Intersection Crash Rates

N. Wilson Drive Intersections	Crash Severity			Total Crashes (2011-2015)	Crash Rate (Crashes per Million Entering Vehicles)
	Fatal	Injury	Property Damage Only		
E. Kenmore Pl	0	0	0	0	0.00
E. Olive St	0	2	3	5	0.30
N. Olsen Ave	0	0	1	1	0.06
N. Alpine Ave	0	1	1	2	0.12
N. Wildwood Ave	0	1	0	1	0.06
N. Marlborough Dr	0	0	0	0	0.00
N. Sheffield Ave	0	0	1	1	0.06
E. Congress St	0	1	0	1	0.06
E. Kensington Blvd	0	0	1	1	0.06
E. Glendale Ave	0	0	0	0	0.00



EXISTING AERIAL IMAGE