

The below is an overview of the events that took place on Sunday, May 31, 2020:

The North Shore EOC along with Milwaukee Fusion Center had been monitoring the situation. At approximately 9:00 PM Shorewood squads were dispatched to E. Edgewood Ave. and Oakland because we were being told the large group was headed north on Oakland from Milwaukee. Our plan called for allowing the group of people to peacefully walk into Shorewood and the belief was they would want to walk north on Oakland to Capitol. Officers closed off the side streets on Oakland and Capitol to prevent vehicle traffic from coming towards the group. We were being told the group was approximately 1,500 people being followed by 200-300 vehicles. This information turned out to be fairly accurate.

Information continued to come in that the groups intent was to move to E. Capitol and to Walmart at 401 E. Capitol Dr. We continued to make safe passage for them through Shorewood. At no time was our intent to stop or confront the group. We simply wanted to make sure the route was clear and no vehicles confronted the crowd from the north as this would be a dangerous situation. As the group approached the intersection of Oakland and Edgewood; a large number of subjects wearing all black with orange bandanas over their face and tied to their arms were observed running north into Shorewood, all with backpacks.

At 9:50 p.m., 50 minutes after the curfew started in Milwaukee the first group of protesters passed Edgewood Avenue and continued north on Oakland. The group for the most part at this time was very peaceful and friendly towards officers and we were able to make several positive contacts with multiple people.

As officers spoke with the group it was discovered at approximately 9:56 a Shorewood squad parked on Oakland and Edgewood was found to have sustained heavy damage. Upon further inspection the rifle was determined to been forcibly removed from the squad and was stolen. Squad 910 sustained the following damage: Numerous dents on the roof due to multiple people stomping on the hood. The hood sustained substantial denting and has numerous foot prints on it. Both passenger side doors are substantially damaged and a puncture to the front passenger side door. Both door windows have chips from rocks thrown against them. The front right quarter panel sustained damage. The rear driver side door has light denting in it from being kicked several times. The interior of the squad, the center console mounts have been broken and the counsel kicked over. The MDC mount is irreparably damaged. The rifle mount has also been damaged and it is believed to have been kicked or twisted to get the rifle free.

See the photo below for an example of the damage:

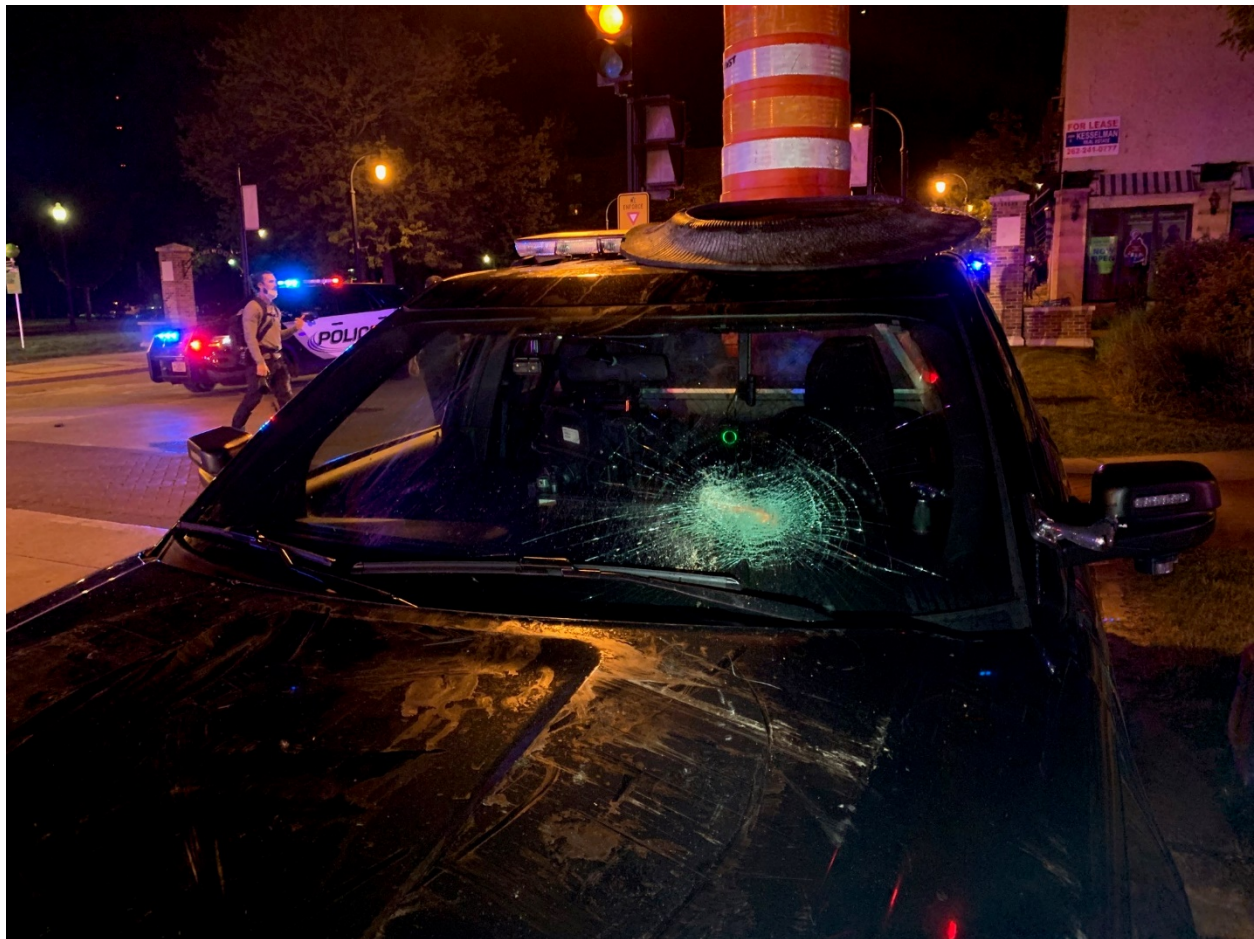


At this same time, the people that were passing the intersection began throwing ice bottles, beer cans, and multiple hard objects at officers. At 9:57 PM a Shorewood officer was struck in the back with a half of a brick. Throughout the remainder of the event hard items were thrown at officers. It should be noted that our officers did not engage with anyone even after items were being thrown at them.

The group then suddenly diverted and rerouted onto eastbound Edgewood Ave from Capitol. Several individuals in all black with orange bandanas redirected the group. Previous protestors backtracked on Oakland and then also went east bound on E. Edgewood. Officers had to be quickly redeployed to make Edgewood a safe route for the group to proceed. It took some time and coordination to do so.

The group eventually made the following route: east on Edgewood Ave to Maryland Ave; north on Maryland Ave to Menlo Blvd; east on Menlo Blvd to Downer Ave; south on Downer Ave back into the City of Milwaukee. As the group was moving 200-300 vehicles were following. It should be noted that once the group turned east on Edgewood it was difficult to determine where they wanted to proceed. We tried to direct the group towards Downer as we thought that was the best street to handle the large group. It should also be noted that at no time did we prevent the group from moving.

At 9:59 PM, a Shorewood officer at intersection allowing for safe travel of the pedestrian group was approached by multiple vehicles attempting to ram the squad; the officer pulled back from the area to avoid being struck. Approximately at this same time it was discovered a Brown Deer PD squad was damaged at Edgewood and Oakland. The vehicle sustained extensive damage to the doors, quarter panels, hood, windshield, and roof of the vehicle. Numerous subjects also poured approximately four bottles of liquor on the top of the squad. There were numerous people yelling to "light it up! Torch it!" however no fire was started. See the photo below:



As the group was on Menlo between Maryland and Downer, officers at the intersection of Menlo and Maryland noticed a male wearing all black with an orange bandana, holding an unlit Molotov cocktail standing approximately 20-25 feet from officers, holding the Molotov cocktail in one hand and pointing directly at officers while yelling at them. Traffic moving east on Menlo Blvd were driving over lawns, landscaping, sidewalks. The grassy median of Menlo has numerous tire tracks from vehicles that were

driving on the medians. There are several front lawns on Menlo that were also driven on. At this point people on foot and hanging out of vehicle continued to throw hard objects at officers and squads. An Officer at Prospect/Menlo also had large number of people threatening and acting aggressively towards him but again at no time did the officers engage with anyone.

Someone in the group indicated to our officers that he had personal property (cell phone) physically ripped from his hands and was stolen by protesters. The individual did not file a report as of this time and left while officers were busy keeping the area safe.

At approximately 10:17 PM, the last vehicles and foot traffic turned east on Menlo Blvd and at 10:21 PM, headed south on N. Downer Avenue. At 10:27 PM, MCSO, Milwaukee TEU and MIRT teams arrived at Oakland / Edgewood. Three armored vehicles also arrived on scene. They began to make arrests in the City of Milwaukee south of Edgewood and Oakland. They made approximately 10 arrests.

At approximately 10:51, the group had moved south out of Shorewood. Officers remained in the area for several hours monitoring the area.

At 12:29 AM, approximately 100 cars at extreme speeds began traveling east bound on Capitol Drive on both side of the roads (east and west biund), all without any headlights illuminated. Officers were deployed to the intersection at Capitol and Humboldt. The vehicles saw our squads and made a u-turn and continued west on Capitol. We maintained that intersection for several hours because these vehicles continuously approached this intersection. During the event numerous squads reported hard objects being thrown at squads and Officers.

Officers were later deployed to Glendale to assist with similar instances at 1:42 AM and 2:27 AM on Silver Spring and Milwaukee River Parkway. We were able to deter all groups of vehicles. At 2:34 AM, a vehicle was set on fire at Heiser Ford. NSFD responded and put out the fire, suspects were unable to be located.

**** End of Report ****