

BE A WATER DETECTIVE



KEEP AN EYE OUT FOR TROUBLED WATERS

Identifying & Preventing Stormwater Pollution in Your Neighborhood (Illicit Discharges)

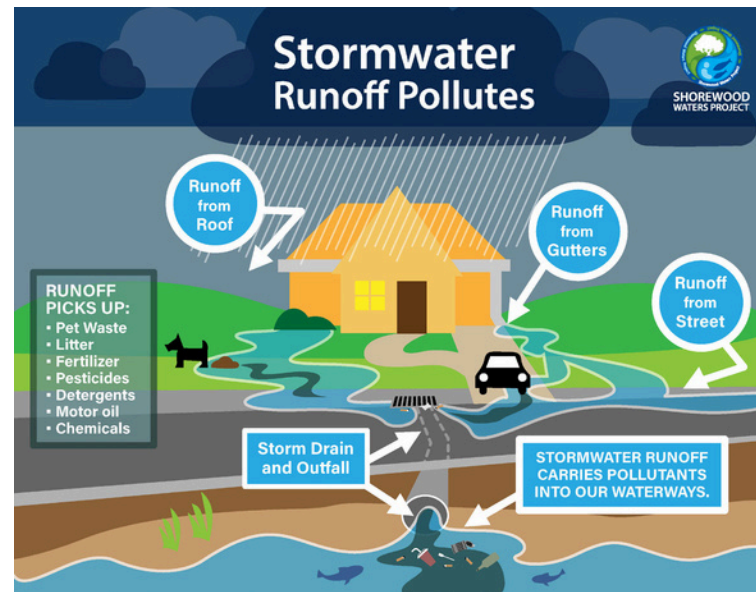
Only stormwater belongs in our storm drains. Keep them free of debris, chemicals and animal waste.



Only stormwater or melting snow should go into street sewers - called storm sewers. Stormwater already carries pollutants - don't add more! Keeping pollutants out of sewers protects our surface water.

WHAT IS STORMWATER?

Stormwater runoff is water from rain or melting snow that flows across the land and does not soak into the ground. As it flows it gathers everything in its path on paved surfaces, bare soil, gardens, lawns and woodlands. This flow can gather animal waste, litter, fertilizers, pesticides, salt, oil, and debris and transports this dirty mix to a storm sewer.



These storm sewers either flow directly into local waterways via outfalls (separated sewer), or combine with a sanitary sewer and flow to the treatment plant to be treated (combined sewer). Generally, the area east of Oakland Ave. is served by the combined sewers. The rest of Shorewood has separated sewers that flow directly into the Milwaukee River or Lake Michigan.

ILLEGAL SEWER DUMPING OR ILLICIT DISCHARGES

When debris or fluids other than stormwater enter municipal storm sewers this is known as an Illicit Discharge. The storm sewer system is not designed to accept, process, or discharge non-stormwater waste or contaminants.

There are many ways pollutants end up in the storm sewer systems; most are the result of people deciding to pollute. Unscrupulous individuals sometimes use the storm sewer drain inlets to dispose of waste. Putting anything other than stormwater in storm sewers is illegal!



Polluted stormwater and illegal discharges degrade the waters of our wetlands, streams, rivers and lakes.

SOLUTIONS

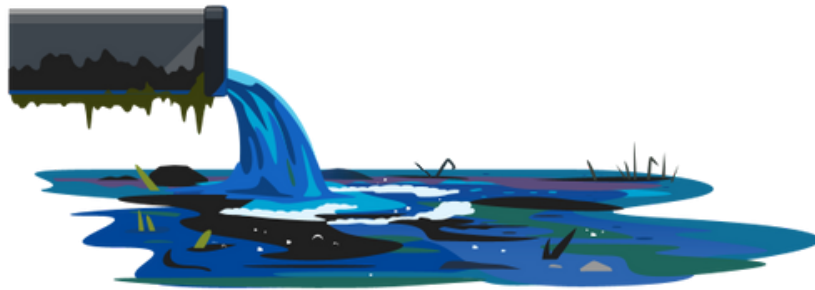
Used Oil: The recycling center at the Shorewood Department of Public Works accepts used motor oil, antifreeze, plastics numbered 1-7, cardboard, newspaper, glass, office paper, books, magazines. Check hours of operation at www.villageofshorewood.org/dpw

Hazardous Household Waste: The Milwaukee Metropolitan Sewerage District (MMSD) sponsors three year-round facilities where Milwaukee County residents can dispose of household hazardous wastes. Yearly the MMSD also sponsors several mobile site collections throughout the area. Both these facilities collect many types of household wastes including batteries, fluorescent light bulbs, paint and pesticides.

Visit www.mmsd.com for details.

EXAMPLES OF ILLEGAL DUMPING IN STORM SEWERS

1. Animal waste
2. Oil or automobile fluids flushing
3. Camper or RV flushing
4. Cooking oil
5. Home improvement or construction debris or waste – paint, concrete, wood or hardware
6. Household hazardous waste or chemicals
7. Pesticides, herbicides, or fertilizer
8. Grass clippings or leaf litter
9. Industrial waste
10. Illegal laundry wastewater connections
11. Illegal sanitary sewer connections



REPORT SIGNS OF FOUL PLAY – ILLICIT DISCHARGES:

1. Outfalls flowing in dry weather
2. Outfalls with foul odors, soap residue, distinct color or oil sheen
3. Visible sewage waste
4. Although most river outfalls are not visible from land, if you're in the water fishing or kayaking you may see outfalls on the south end of Estabrook Park and north and south ends of Hubbard Park. **See steps for reporting on the back of flier.**



BE THE SOLUTION TO PROTECTING WATER QUALITY

- Never dump anything down storm drains.
- Pick up pet waste.
- Repair vehicle leaks.
- Keep grass clippings, leaves, litter and debris out of street gutters and storm drains.
- Use lawn and garden chemicals sparingly and sweep up excess from driveways, sidewalks and roads. OR, consider not using chemicals at all and use sustainable green alternatives to enhance our lawn and garden.
- Bring used oil and antifreeze to the DPW yard for disposal.
- Dispose of paints and other household chemicals at MMSD Hazmat drop off locations.
- Use a commercial car wash or wash your vehicle on grass.
- Direct downspouts onto grassy areas away from paved surfaces.
- Stabilize erosion-prone areas in your yard by planting groundcover or other plants. Try using native plants!



BE A DETECTIVE AND LET US KNOW:

To report a suspicious discharge, known violation, or clogged storm drain, call or email the Department of Public Works (DPW).

414-847-2650

dpw@shorewoodwi.gov

General Stormwater info:

www.villageofshorewood.org/stormwater

This flier is a community educational piece as part of the Village of Shorewood's MS4 Illicit Discharge Detection and Elimination program.