

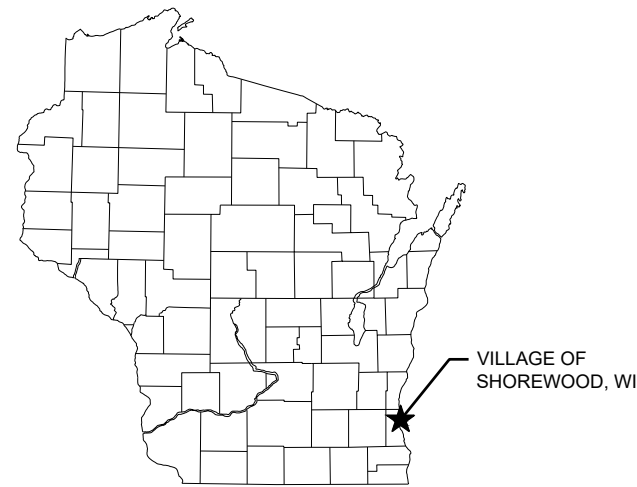
TEMPORARY TRAFFIC CALMING DEVICES

FOR

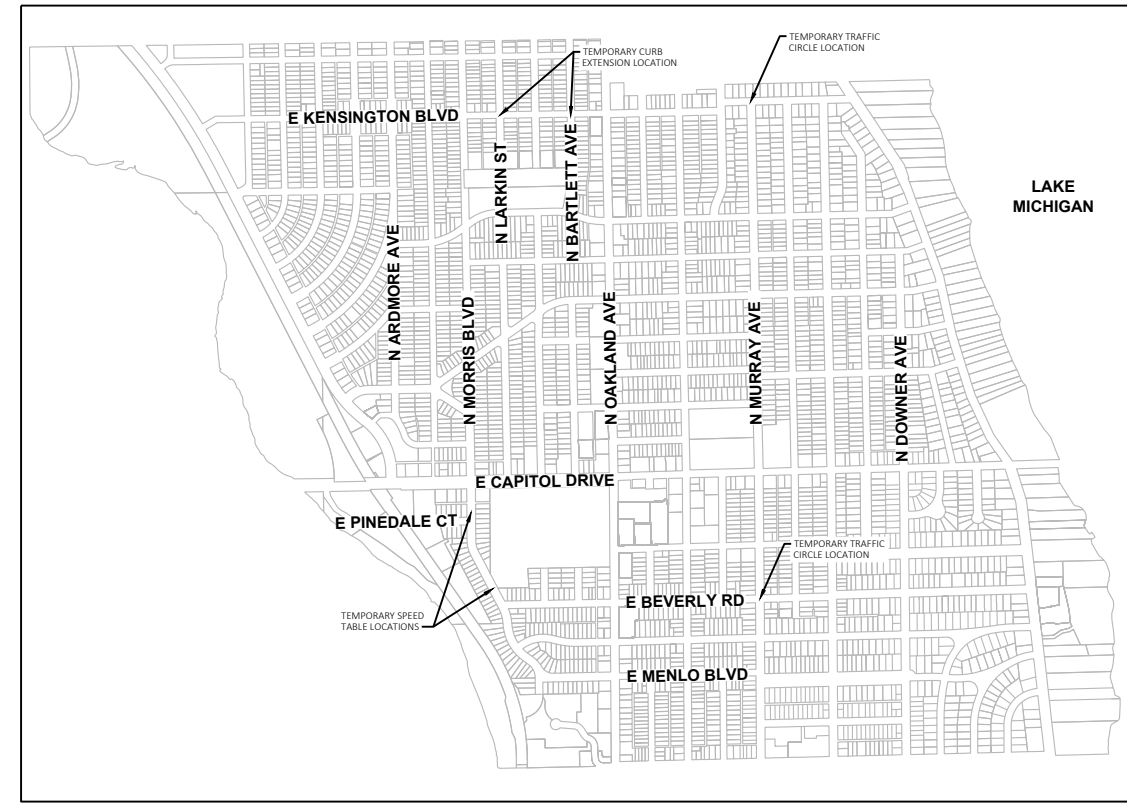
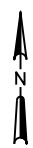
VILLAGE OF SHOREWOOD

MILWAUKEE COUNTY, WISCONSIN

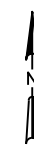
JANUARY 2025



PROJECT LOCATION MAP
NO SCALE



PROJECT LOCATION MAP
NO SCALE



LIST OF DRAWINGS

<u>DRAWING TITLE</u>	<u>SHEET NO.</u>
TITLE SHEET	1
CONSTRUCTION DETAILS	2
TEMPORARY TRAFFIC CIRCLE DETAILS	3-4
TEMPORARY SPEED TABLE DETAILS	5
TEMPORARY CURB EXTENSION DETAILS	6-7

126 NORTH JEFFERSON STREET, SUITE 350
MILWAUKEE, WI 53202
414 271-0771
414 271-8312 FAX
WWW.STRAND.COM

JOB NO.: 25-01



SHEET
1

GENERAL NOTES:

TRAFFIC LOGIX RUBBER CURBING
REFER TO MANUFACTURER PRODUCT SPECIFICATIONS AND INSTALLATION INSTRUCTIONS FOR ADDITIONAL INFORMATION.

USE ONLY MANUFACTURER-SUPPLIED LAG BOLTS, WASHERS, AND NYLON ANCHORS TO SECURE RUBBER CURBING.

CLEAN THE SURROUNDING INSTALLATION AREA, FREE FROM ROADWAY GRAVEL AND DEBRIS, PRIOR TO INSTALLATION.

MAINTAIN A MINIMUM 16-FOOT PAVEMENT WIDTH BETWEEN THE EDGE OF PAVEMENT AND THE EDGE OF RUBBER CURBING AT ALL INTERSECTION QUADRANTS.

RUBBER CURBING INSTALLATION:
AFFIX EACH RUBBER CURBING UNIT TO THE PAVEMENT WITH THREE MANUFACTURER-PROVIDED 3/8-INCH X 4-INCH RUST RESISTANT LAG BOLTS, NYLON ANCHORS, AND 3/8-INCH WASHERS.

DRILL A 9/16-INCH DIAMETER HOLE INTO THE PAVEMENT THROUGH EACH HOLE OF THE RUBBER CURBING UNIT. USE A HIGH PERFORMANCE AIR COMPRESSOR TO CLEAN THE MOUNTING HOLES OF DUST AND DEBRIS.

INSTALL THE NYLON ANCHORS INTO THE MOUNTING HOLES WITH THE MANUFACTURER-PROVIDED INSTALLATION TOOL. INSERT LAG BOLTS INTO THE NYLON ANCHORS AND TIGHTEN. DO NOT OVER-TIGHTEN THE BOLTS.

RUBBER CURBING REMOVAL:
REMOVE RUBBER CURBING PRIOR TO WINTER MONTHS. REMOVE AND SALVAGE INDIVIDUAL BOLTS, WASHERS, AND RUBBER CURBING. THE NYLON ANCHORS SHALL NOT BE REUSED IF REMOVED.

IF RUBBER CURBING WILL NOT BE REINSTALLED IN THE SAME ANCHOR LOCATIONS, LEAVE THE NYLON ANCHORS IN THE PAVEMENT AND SEAL OVER ANCHOR HOLES WITH TAR.

IF RUBBER CURBING WILL BE REINSTALLED IN THE SAME ANCHOR LOCATIONS, FILL ANCHOR HOLES WITH SILICONE TO KEEP DIRT AND/OR DEBRIS FROM ENTERING THE HOLES. DRILL OUT THE SILICONE AND REMOVE DEBRIS THAT MAY HAVE ENTERED THE ANCHOR HOLES PRIOR TO REINSTALLING RUBBER CURBING.

SIGNS
INSTALL SIGN POSTS AND SIGNS IN ACCORDANCE WITH SECTIONS 634 AND 637 OF THE WISDOT STANDARD SPECIFICATIONS.

REFER TO THE WISDOT APPROVED PRODUCT LIST OF PORTABLE SIGN STANDS FOR STATE-APPROVED TEMPORARY SIGN SUPPORTS.

MAINTAIN A 4-FOOT MOUNTING HEIGHT TO THE BOTTOM OF ALL SIGNS WITHIN THE CENTER OF THE TRAFFIC CIRCLE.

MARKERS
REFER TO SECTIONS 633 OF THE WISDOT STANDARD SPECIFICATIONS FOR ADDITIONAL INFORMATION.

REFER TO THE WISDOT APPROVED PRODUCT LIST OF FLEXIBLE TUBULAR MARKERS FOR STATE-APPROVED BOLT DOWN AND GLUE DOWN MARKERS.

INSTALL MARKERS PERMANENT FLEXIBLE IN ACCORDANCE WITH THE MANUFACTURER INSTALLATION INSTRUCTIONS.

PRODUCT RESOURCE LINKS:
WISDOT APPROVED PRODUCT LIST - FLEXIBLE TUBULAR MARKERS
WISDOT APPROVED PRODUCT LIST - PORTABLE SIGN STANDS
TRAFFIC LOGIX RUBBER CURBING

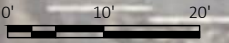
E BEVERLY STREET

N MURRAY AVENUE



LEGEND

- TRAFFIC LOGIX RUBBER CURBING
- MARKERS PERMANENT FLEXIBLE
- ⊥ POSTS TUBULAR STEEL 2X2-INCH X 6.5-FT ON TEMPORARY SUPPORT
- POSTS TUBULAR STEEL 2X2-INCH X 14-FT



DATE:	NO.	REVISIONS

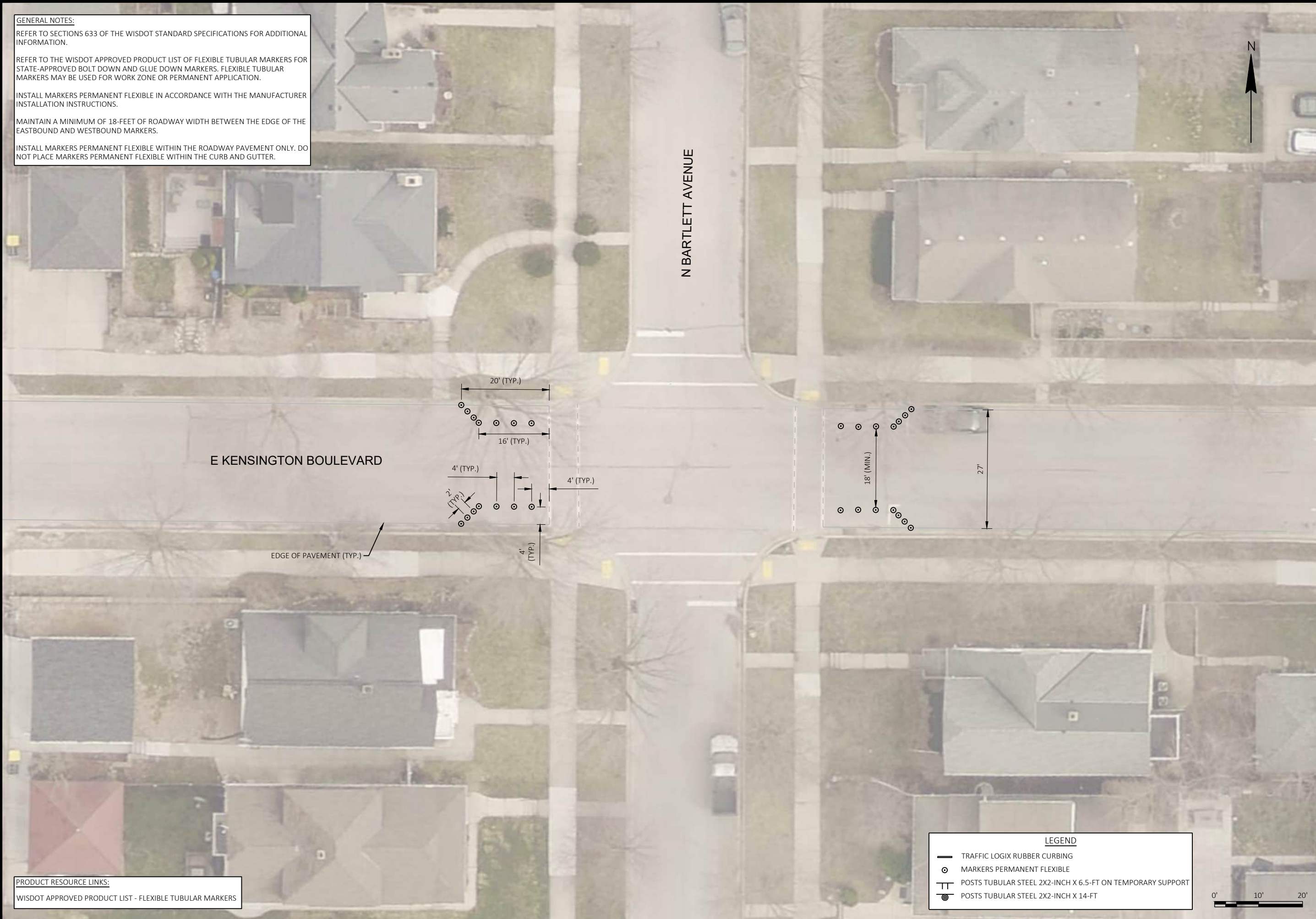
TEMPORARY TRAFFIC CIRCLE DETAILS
NORTH MURRAY AVENUE AND EAST BEVERLY ROAD
TEMPORARY TRAFFIC CALMING DEVICES
VILLAGE OF SHOREWOOD
MILWAUKEE COUNTY, WISCONSIN

JOB NO.
25-01
PROJECT MGR.
EJN



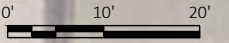
SHEET
3

GENERAL NOTES:
 REFER TO SECTIONS 633 OF THE WISDOT STANDARD SPECIFICATIONS FOR ADDITIONAL INFORMATION.
 REFER TO THE WISDOT APPROVED PRODUCT LIST OF FLEXIBLE TUBULAR MARKERS FOR STATE-APPROVED BOLT DOWN AND GLUE DOWN MARKERS. FLEXIBLE TUBULAR MARKERS MAY BE USED FOR WORK ZONE OR PERMANENT APPLICATION.
 INSTALL MARKERS PERMANENT FLEXIBLE IN ACCORDANCE WITH THE MANUFACTURER INSTALLATION INSTRUCTIONS.
 MAINTAIN A MINIMUM OF 18- FEET OF ROADWAY WIDTH BETWEEN THE EDGE OF THE EASTBOUND AND WESTBOUND MARKERS.
 INSTALL MARKERS PERMANENT FLEXIBLE WITHIN THE ROADWAY PAVEMENT ONLY. DO NOT PLACE MARKERS PERMANENT FLEXIBLE WITHIN THE CURB AND GUTTER.



PRODUCT RESOURCE LINKS:
 WISDOT APPROVED PRODUCT LIST - FLEXIBLE TUBULAR MARKERS

LEGEND	
	TRAFFIC LOGIX RUBBER CURBING
	MARKERS PERMANENT FLEXIBLE
	POSTS TUBULAR STEEL 2X2-INCH X 6.5-FT ON TEMPORARY SUPPORT
	POSTS TUBULAR STEEL 2X2-INCH X 14-FT



NO.	REVISIONS	DATE:

TEMPORARY CURB EXTENSION DETAILS
NORTH BARTLETT AVENUE AND EAST KENSINGTON BOULEVARD
 TEMPORARY TRAFFIC CALMING DEVICES
 VILLAGE OF SHOREWOOD
 MILWAUKEE COUNTY, WISCONSIN

JOB NO.
25-01
PROJECT MGR.
EJN



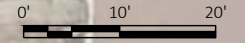
SHEET
6

GENERAL NOTES:
 REFER TO SECTIONS 633 OF THE WISDOT STANDARD SPECIFICATIONS FOR ADDITIONAL INFORMATION.
 REFER TO THE WISDOT APPROVED PRODUCT LIST OF FLEXIBLE TUBULAR MARKERS FOR STATE-APPROVED BOLT DOWN AND GLUE DOWN MARKERS. FLEXIBLE TUBULAR MARKERS MAY BE USED FOR WORK ZONE OR PERMANENT APPLICATION.
 INSTALL MARKERS PERMANENT FLEXIBLE IN ACCORDANCE WITH THE MANUFACTURER INSTALLATION INSTRUCTIONS.
 MAINTAIN A MINIMUM OF 18- FEET OF ROADWAY WIDTH BETWEEN THE EDGE OF THE EASTBOUND AND WESTBOUND MARKERS.
 INSTALL MARKERS PERMANENT FLEXIBLE WITHIN THE ROADWAY PAVEMENT ONLY. DO NOT PLACE MARKERS PERMANENT FLEXIBLE WITHIN THE CURB AND GUTTER.



PRODUCT RESOURCE LINKS:
 WISDOT APPROVED PRODUCT LIST - FLEXIBLE TUBULAR MARKERS

LEGEND	
	TRAFFIC LOGIX RUBBER CURBING
	MARKERS PERMANENT FLEXIBLE
	POSTS TUBULAR STEEL 2X2-INCH X 6.5-FT ON TEMPORARY SUPPORT
	POSTS TUBULAR STEEL 2X2-INCH X 14-FT



NO.	REVISIONS	DATE:

TEMPORARY CURB EXTENSION DETAILS
NORTH LARKIN STREET AND EAST KENSINGTON BOULEVARD
 TEMPORARY TRAFFIC CALMING DEVICES
 VILLAGE OF SHOREWOOD
 MILWAUKEE COUNTY, WISCONSIN

JOB NO.
25-01
PROJECT MGR.
EJN



SHEET
7