



1000 Harrison Avenue, Columbus, OH 43215-3006
614.291.1100 | 614.291.1101
www.zimmermanstudio.com

3. DRAWINGS

Department of Public Works

4132 N Holton Aerials



Context, West Side (Looking East)



North Side (Looking South)



East Side (Looking West)



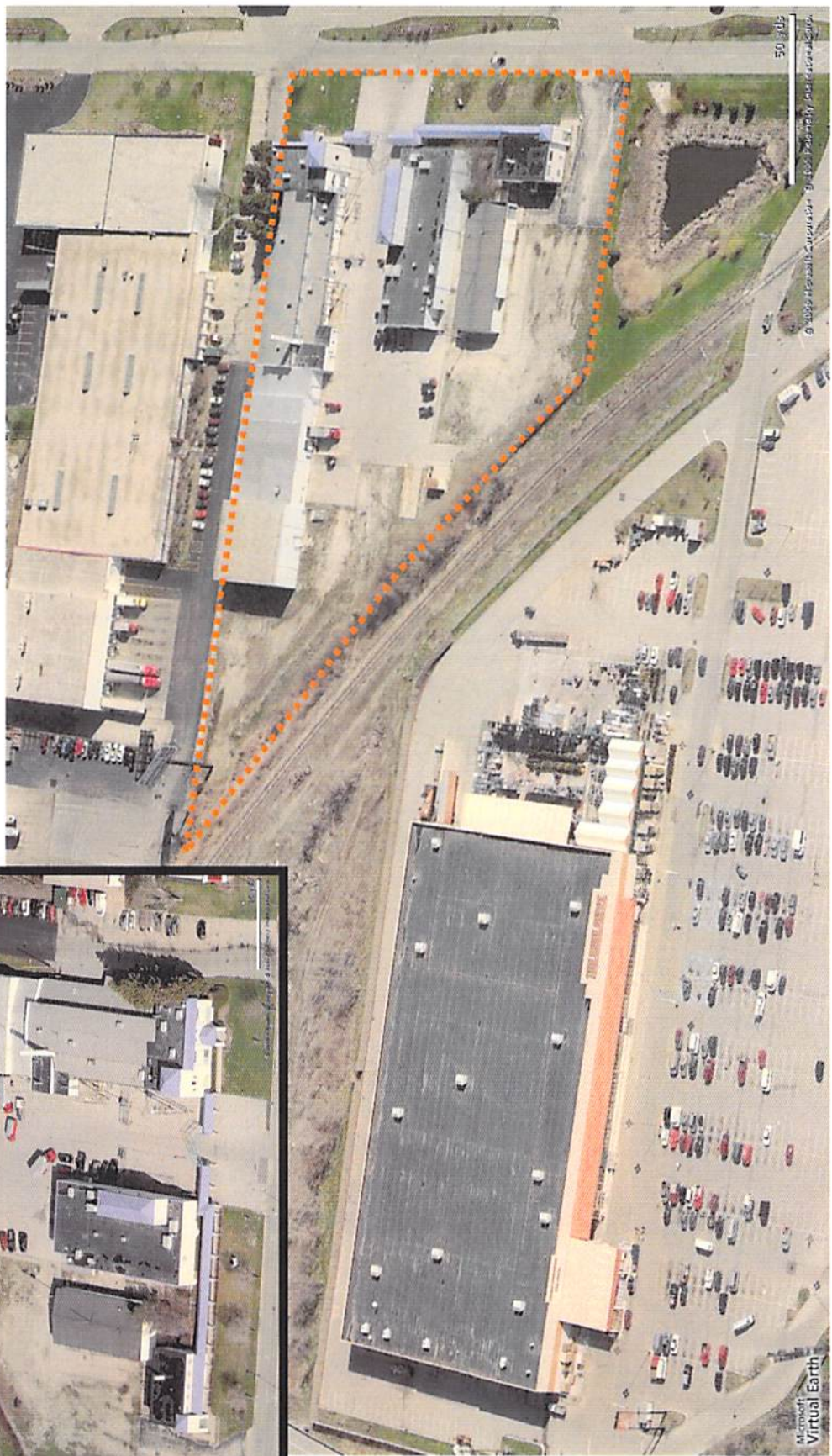
South Side (Looking North)

East Side (Looking West)



4215(?) North Port Washington

Property line is very approximate, based only on evidence in photo



301 East Vienna-Context



South Side (Looking North)



East Side (Looking West)



East Side (Looking West)



North Side (Looking South)