

VILLAGE OF SHOREWOOD, WISCONSIN
TRANSPORTATION + PARKING ANALYSIS

**TOWN HALL MEETING
FINDINGS AND RECOMMENDATIONS**

December 4, 2019



**WALKER
CONSULTANTS**



**ERIKSSON
ENGINEERING
ASSOCIATES, LTD.**



PARKING + TRANSPORTATION PLANNING GOALS



STANDARDIZATION



COMMUNICATION



ACCESSIBILITY



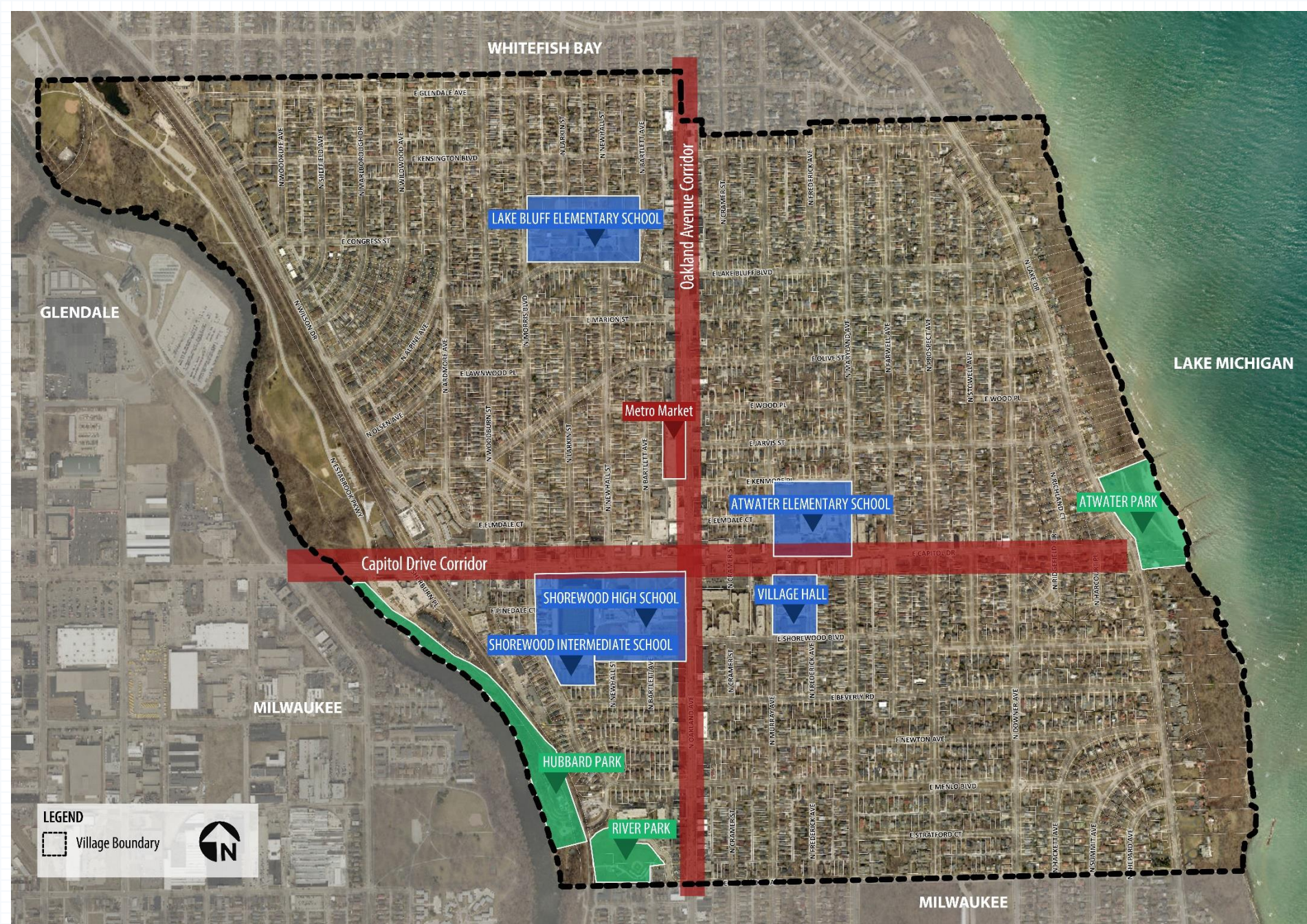
SAFETY



COMPLIANCE

Study Area

- N – Whitefish Bay
- E – Lake Michigan
- S – Milwaukee
- W – Milwaukee River



Study Area

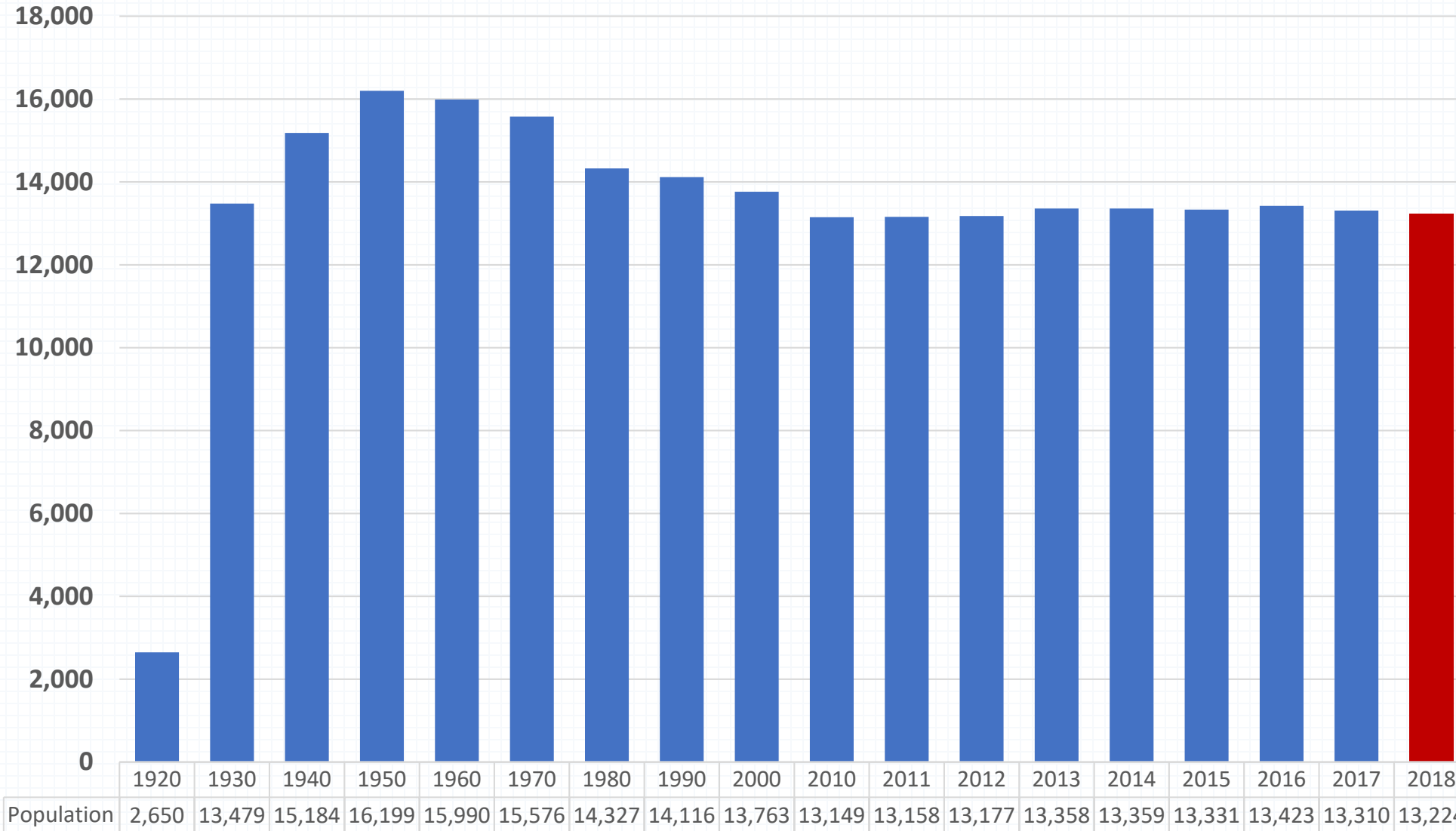
#1 Highest Population Density per Square Mile

13,224 - Population

1.59 - Square Miles

8,318.91 - People/mi²

Shorewood Population



Community Engagement

HOW WE ENGAGED:

- **6** – Town Hall Meetings (*Including Tonight*)
- **9** – Focus Group Meetings
- **4** – Technical Advisory Group Meetings
- **130+** – Total Attendees
- **85+** – Online Comments Submitted (*via Village Website*)

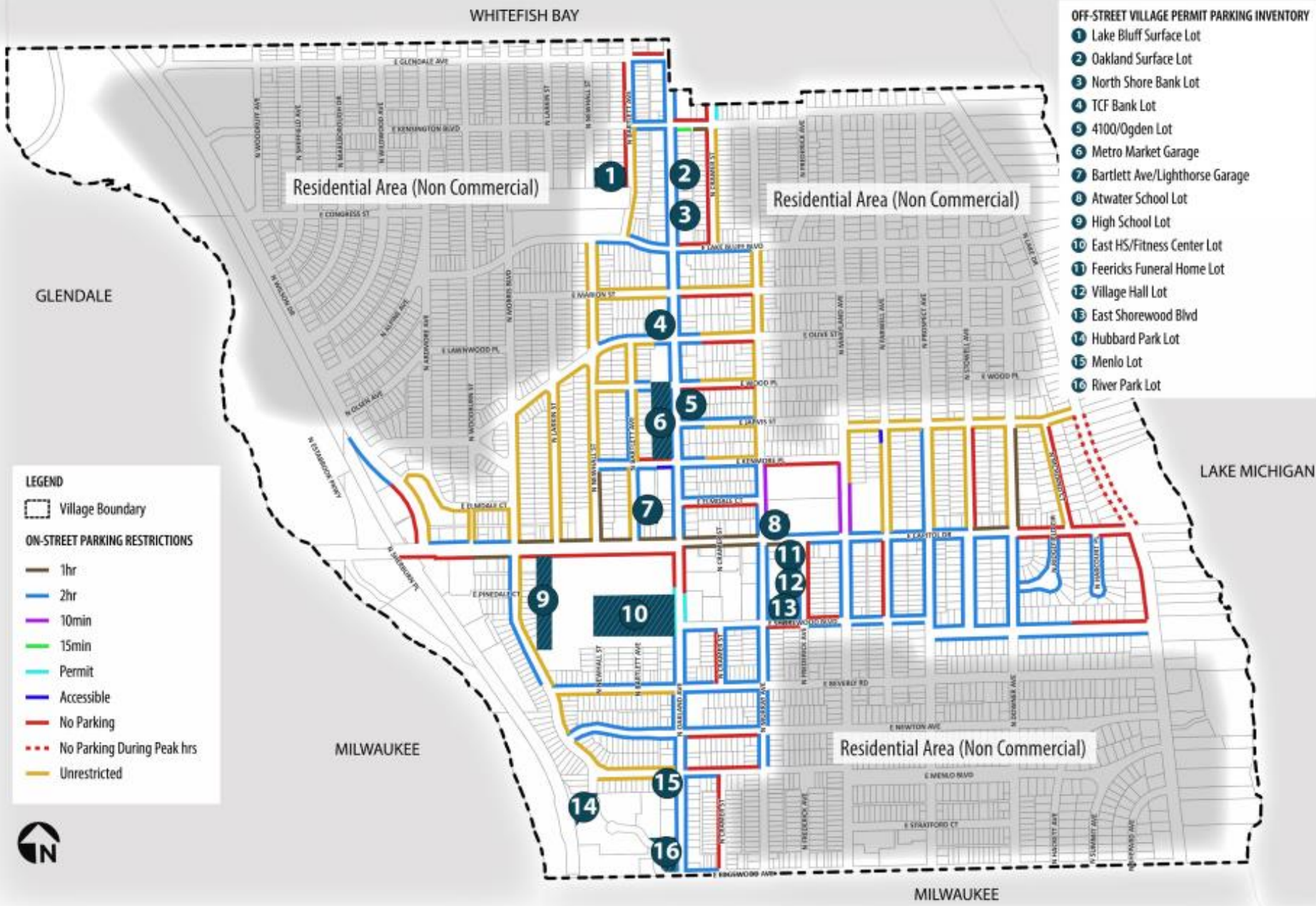


Community Engagement

Theme Identification



Current Conditions



KEY OBSERVATIONS

 **ON-STREET SPACES**
2,458±* Total **70%**

 **PUBLICLY ACCESSIBLE GARAGES**
02 Total

 **PUBLIC SURFACE LOTS**
12 Total

 **OFF-STREET SPACES**
1,069± Total **30%**

* On-street spaces within the data collection area

Parking Occupancy Percentage for 2:00 PM

Parking Type	Parking Inventory	Parking Adequacy	
		2:00 PM	Occ. %
On-Street	2,458	695	28%
Surplus/(Deficit)		1,763	
Off-Street	1,069	548	51%
Surplus/(Deficit)		521	
Total	3,527	1,243	35%
Surplus/(Deficit)		2,284	

Total Surplus – 2,284



LEGEND

- Study Area Boundary
- Block Numbers
- Off-Street Facilities
- No Parking On-Street

Occupancy %	Off-Street	On-Street
0-49.9%		
50-69.9%		
70-84.9%		
85-100%		

Parking Occupancy Percentage for 7:00 PM

Parking Type	Parking Inventory	Parking Adequacy	
		7:00 PM	Occ. %
On-Street	2,458	639	26%
Surplus/(Deficit)		1,819	
Off-Street	1,069	515	48%
Surplus/(Deficit)		554	
Total	3,527	1,154	33%
Surplus/(Deficit)		2,373	

Total Surplus – 2,373



LEGEND

- Study Area Boundary
- # Block Numbers
- Off-Street Facilities
- No Parking On-Street

Occupancy %	Off-Street	On-Street
0-49.9%		
50-69.9%		
70-84.9%		
85-100%		

Parking Occupancy Percentage for 11:00 PM

Parking Type	Parking Inventory	Parking Adequacy	
		11:00 PM	Occ. %
On-Street	2,458	347	14%
Surplus/(Deficit)		2,111	
Off-Street	1,069	320	30%
Surplus/(Deficit)		749	
Total	3,527	667	19%
Surplus/(Deficit)		2,860	

Total Surplus – 2,860



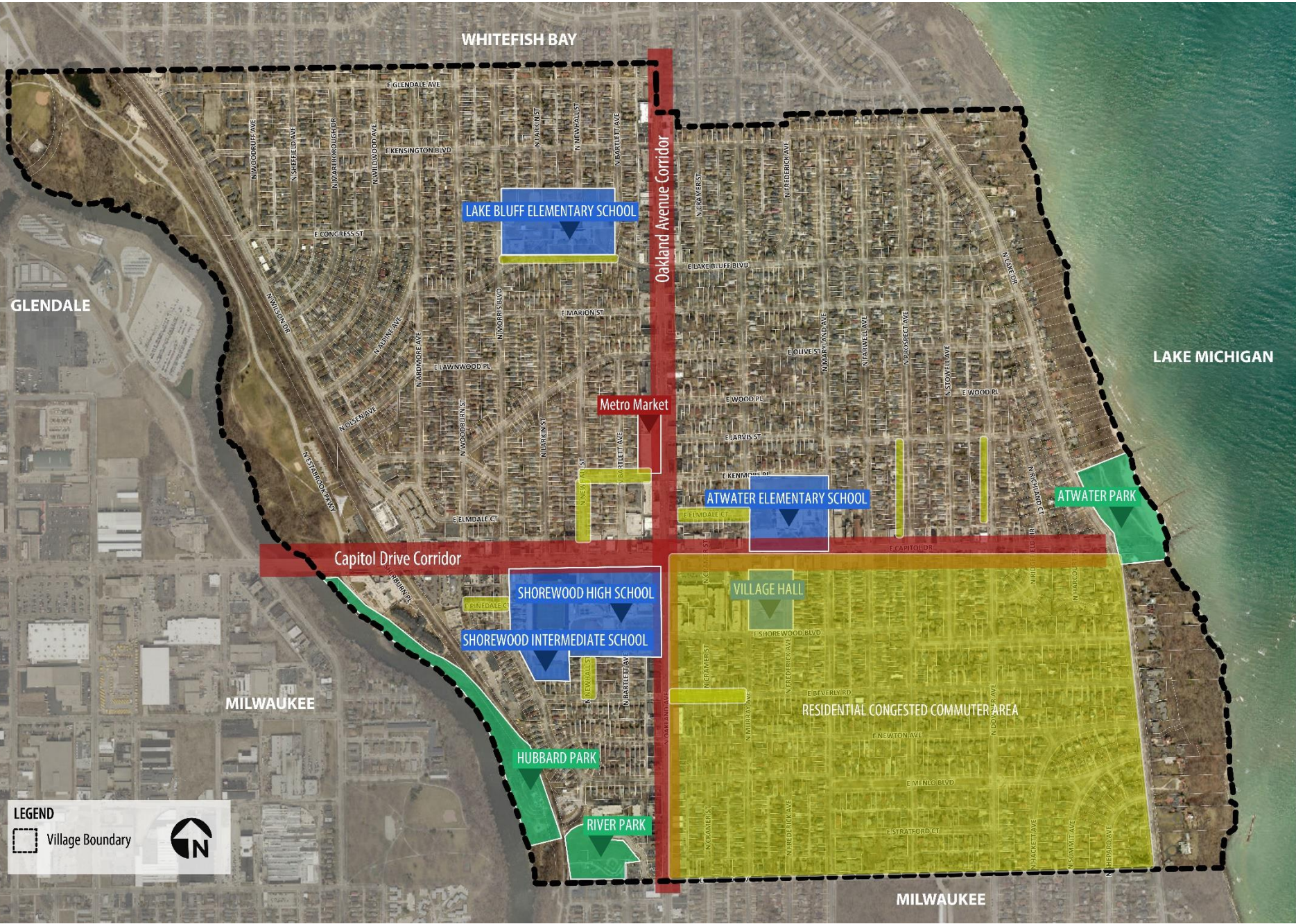
LEGEND

- Study Area Boundary
- Block Numbers
- Off-Street Facilities
- No Parking On-Street

Occupancy %

0-49.9%	Off-Street	On-Street
50-69.9%		
70-84.9%		
85-100%		




Current Daytime Parking Permit Districts



Current Overnight Permits

- **On-Street Overnight Resident Parking Program**— Allows parts of N. Oakland Ave, E. Capitol Drive, and N. Wilson Drive to purchase quarterly parking permits granting on-street alternate-side parking for one vehicle
- **Temporary Overnight Permissions** - Residents/Visitors of the Village of Shorewood are allowed 20 temporary, on-street overnight parking permissions per license plate in a calendar year
- **Off-Street Overnight Parking Permissions** – Allows monthly off-street overnight permissions for designated lots in the Village.

RECOMMENDATIONS

- On-Street Overnight Resident Parking Program  **Village Resident Night Parking Permit Program**
- Temporary Overnight Permissions  **Maintain Current Policy**
- Off-Street Overnight Parking Permissions  **Maintain Current Policy**

Recommended On-Street Overnight Resident Permits

On-Street Overnight Resident Parking Program–

- All Shorewood residents are eligible to park between the hours of 3:00AM and 5:00AM on any street not designated as a no parking or 15 minute loading zone, with proof of residency
- No more than one (1) permit per license plate. Maximum two (2) permits per household. Also subject to Winter Parking Policy.





PURPOSE

- To provide more choices for residents who have few public overnight parking options
- Maximum the use of existing and available public resources

Current On-Street Time Limits

- **10 Minute**
- **15 Minute**
- **1 Hour**
- **2 Hour**

RECOMMENDATIONS

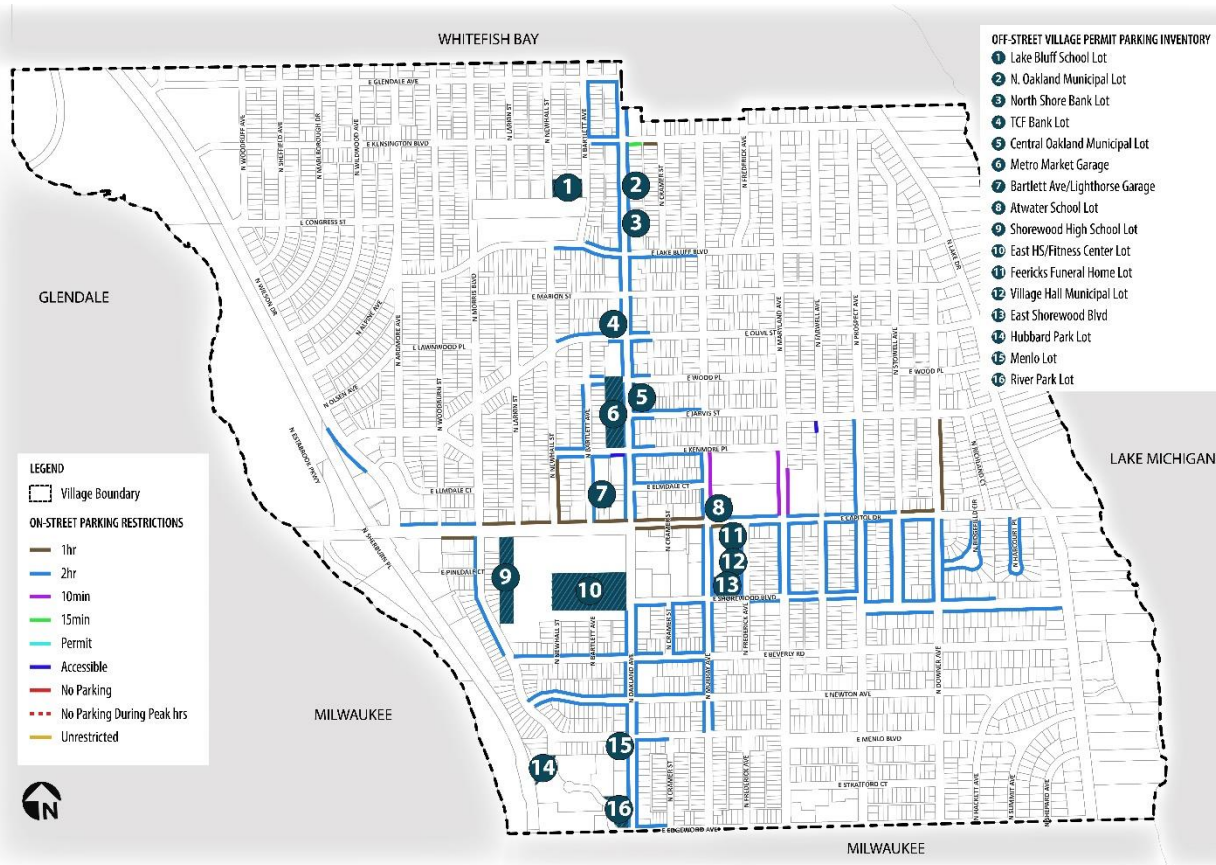
- 10 Minute  **15 Minute**
- 15 Minute  **15 Minute**
- 1 Hour  **2 Hour**
- 2 Hour  **2 Hour**

PURPOSE

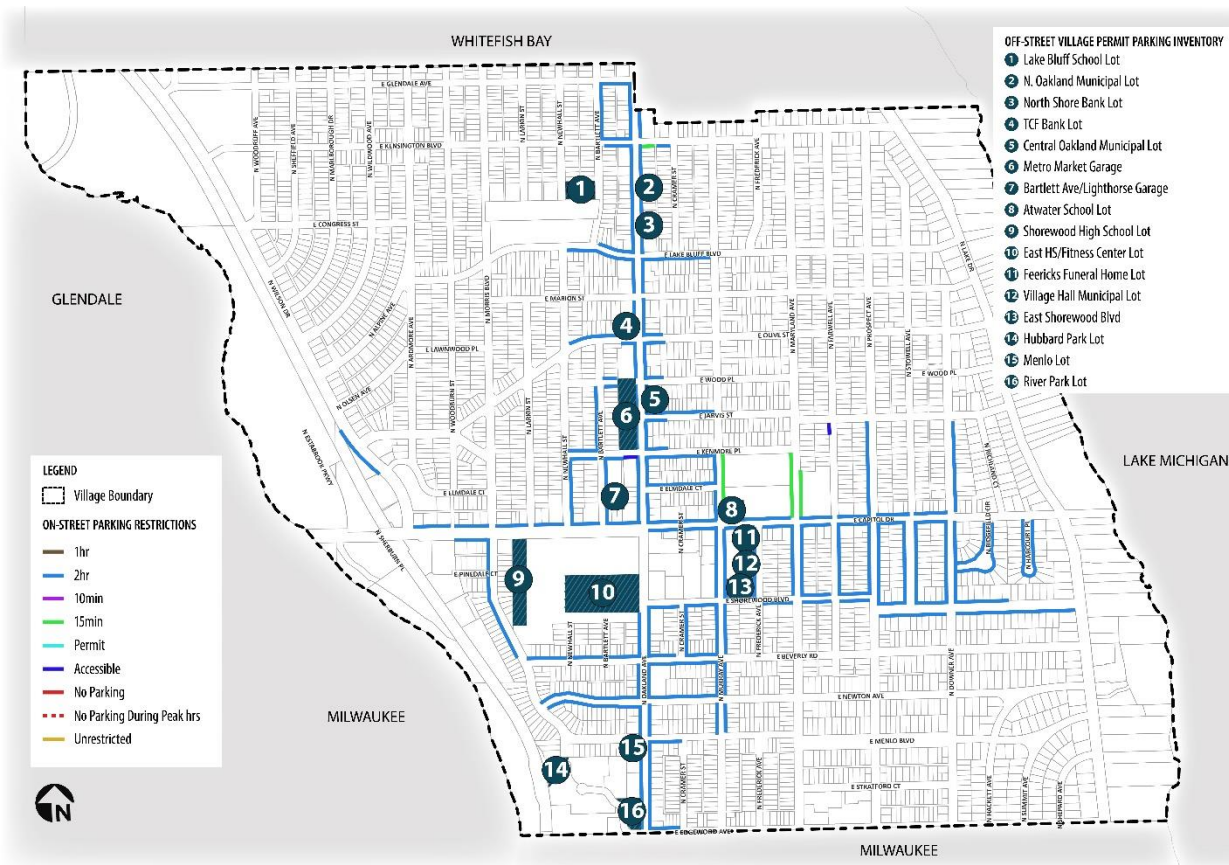
To provide consistent Village wide time restrictions for ease of use for residents and visitors, where parking is currently permitted

On-Street Time Limits

Current



Proposed



Current Winter Parking

- No person shall park any vehicle on the east side or north side of any Village street between December 1 and February 28, annually

RECOMMENDATION

- Alternate side parking is in effect 24/7 year-round unless a particular block or curb area has parking-related signage stipulating otherwise. Vehicles parked on the street must move every 24 hours. The alternate side parking provides the Public Works department with improved access to routine street maintenance and snow removal.

PURPOSE

- Improve public safety
- Prevents long-term vehicle storage
- Allows for more supply year-round

Parking Communication

Parking Point of Contact

1. **Customer Service**

- Permits + Policies
- Parking Information

2. **Public Works**

- Parking + Traffic Signage
- Accessible Parking

3. **Police Department**

- Parking Enforcement
- Citation Payment (web, phone, mail, in-person)



Transportation – Key Recommendations

1. Uniform Design and Application of Traffic Control Devices
2. Metro Market Safety Modifications
3. Morris Boulevard Traffic Calming
4. Kensington/Oakland Traffic Signal
5. Pedestrian Crossing Improvements
6. Murray and Kensington Bike Boulevards
7. Complete Streets

KEY GOALS



STANDARDIZATION

Use standard processes and traffic control measures to consistently apply and communicate with the traveling public



ENFORCEMENT

Ensure compliance of good travel behaviors



ENCOURAGEMENT

Improve use of transportation network by communicating expectations with the public



SAFETY

Improve the safety for all modes of the traveling public

Current Traffic Controls

- **12 Traffic Signals**
 - **34 All-way Stops**
 - **100 Two-way Stops**
 - **10 Yield Signs**
 - **13 Uncontrolled**
-
- **Intersection Control**
 - Dictates Rights of Way
 - Pedestrian Protection
 - Safety



LEGEND

- Traffic Signal
- All-Way Stop
- Two-Way Stop
- Yield

Exhibit 15: Traffic Control Inventory

Bicycle Systems

- **Bike Lanes**
 - Located on Busier Streets
 - Separate Lanes
- **Low Traffic Routes**
 - Shared Road
- **Oak Leaf Trail**
 - Regional Route
- **Bike Boulevards**
 - Murray Avenue
 - Kensington Avenue



Exhibit 17: Bicycle Systems

Shorewood Traffic Volume Trends

Location	2019	2016	2013	2004	1984
<u>Capitol</u> W. Of Oakland	16,700	-	19,300	22,400	22,000
<u>Morris</u> S. Of Capitol	-	5,600	5,000	5,000	4,100
<u>Oakland</u> S. Of Capitol	10,400	12,300	13,900	16,700	18,300
Lake N. Of Capitol	12,800	10,700	10,600	12,900	15,500



Image Source: Google Earth, 2018



Metro Market

- **Increase Lighting**
- **Improve Sight-Lines**
- **Reduce Pedestrian Conflicts**
- **Remove North Crosswalk**

Exhibit 18: Metro Market Recommended Improvements

Traffic Control

- **Kensington at Oakland**

- Traffic Signal Recommended
- Improves Traffic Flow
- Additional Pedestrian Protections

- **All-Way Stop Signs**

- Reduce Number of Locations
 - Olive – 3 in a row
 - Shorewood – 3 in a row
 - Other Locations – 2 in a row

- **Installation of Traffic Control**

- Request to Public Works
 - Research Need
 - Volumes
 - Special Circumstances
 - Safety
 - State/National Standards
 - Input from
 - Police/Planning
 - Develop Recommendations
 - Present to Village Board

Morris-Menlo Cut Through Traffic

- **5,600 vehicles per day**
- **Speeding**
 - 25 mph limit
 - 28-29 mph actual speeds
- **Construct Bump-Outs**
 - South of Capitol
 - North of Pinedale
 - South of Beverly
 - North of Newton
 - East of Morris

- **Slows Travel Speeds**
- **Improves Pedestrian Safety**



Morris-Menlo Intersection

- **Improve Pedestrian Connections/Safety**
- **Encourage Compliance**



Exhibit 20: Morris and Hubbard Intersection Recommended Improvements

Beverly - Morris Intersection

- **Tighten Intersection to Improve Compliance**
- **Improve Pedestrian Safety**



Exhibit 19: Morris and Beverly Intersection Recommended Improvements

Pedestrian Safety

- **Jarvis Street at Lake Drive**
- **Menlo Boulevard at Lake Drive**
- **Install Flashing Beacons**
- **Add Bump-outs in Future**



Capitol Drive at Shorewood High School



- Reduce Number of Crossings or Conflict Points
- Eliminate Conflicts with Left-turns
- Improve Driver Expectations

Transportation Summary

- **Uniform Design and Application of Traffic Control Devices**
- **Public Outreach/Education**
- **Requests through Public Works with Village Staff and Resident Input**
- **Complete Street Ordinance**

Findings

- Urban Grid Network
- Traffic Volumes Stable or Falling
- Multi-Modal Environment
- Safe Network

Questions + Comments



Shorewood WI



WALKER
CONSULTANTS



ERIKSSON ENGINEERING
ASSOCIATES, LTD.